



**ROMAC
INDUSTRIES,
INC.**

1-800-426-9341



Style "FCA501" Flanged Coupling Adapter

Material Specifications

Flanged Body: Ductile iron per ASTM A 536, Grade 65-45-12. Flange meets the dimensional requirements of ANSI Class 125 and 150 bolt circles. Yellow shopcoat. Other flange coatings available on request.

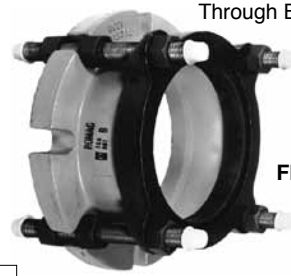
End Ring: Ductile iron per ASTM A 536, Grade 65-45-12. Color coded RED for O.D. and Std. Stl., BLACK for cast iron and YELLOW for A/C.

Gaskets: SBR per ASTM D 2000 MBA 710, compounded for water and sewer service. Flange O-ring gasket is NBR rubber. Other compounds available on request.

Bolts and Nuts: Trackhead bolts, heavy hex nuts, UNC high strength, low alloy, corrosion-resistant steel per AWWA C111. The 10" and 12" flange bolts and nuts are mild steel, electro-galvanized with a hex head. Other materials or special coatings available on request.

Anchor Pins: AISI 12L14 low carbon steel, minimum of 60,000 psi yield strength. The number of pins shown is rated for 150 psi. Stainless steel pins (316 only) are available on request. Stainless steel pins require double the quantity.

Options: For other options and specifications, see page 2-23. For 14" and above, see FC400 on Page 3-5.



Through Bolts w/Nuts

**6" FCA501
without
Flange Bolts**

Meets AWWA C219

NOM. PIPE SIZE	COLOR CODE	GASKET RANGE	APPROXIMATE USE	CATALOG NUMBER	LIST PRICE				Add-On Epoxy L&C	APPROX. WEIGHT (LBS.)
					Complete	Complete w/Anchor Pins ³	Complete with 304 SS Bolts & Nuts	Complete with 316 SS Bolts & Nuts		
3"	RED	3.00 - 3.29	Copper, OD Steel	FCA501 - 3.29	\$176.37	239.20 Pins: 1/2"	\$201.89	\$237.01	\$27.92	16 #
		3.30 - 3.51	Std. Stl. & PVC	FCA501 - 3.51						
		3.50 - 4.00	Std. Stl, Cl/DI & PVC	FCA501 - 4.00						
4" x 3" Flange	RED	3.80 - 4.05	O.D. Stl. C.I. & O.D. Stl.	FCA501 - 4.05-3	219.79	NA	286.11	305.71	34.91	19#
		4.06 - 4.31	Riv. Stl.	FCA501 - 4.31-3						
		4.50 - 4.70	Std. Stl. & PVC	FCA501 - 4.70-3						
	BLACK	4.50 - 4.81	Std. Stl., D.I. & PVC	FCA501 - 4.81-3						
		4.80 - 5.00	Cast Iron & PVC	FCA501 - 5.00-3						
		4.74 - 5.10	C.I. & A/C M.E.	FCA501 - 5.10-3						
		5.11 - 5.30	A/C R.B.	FCA501 - 5.30-3						
4"	RED	3.80 - 4.05	O.D.	FCA501 - 4.05	232.39	298.00	292.42	335.98	34.91	18 #
		4.06 - 4.31	Riv. Stl.	FCA501 - 4.31						
		4.50 - 4.70	Std. Stl. & PVC	FCA501 - 4.70						
	BLACK	4.50 - 4.81	Std. Stl., D.I. & PVC	FCA501 - 4.81						
		4.80 - 5.00	Cast Iron & PVC	FCA501 - 5.00						
		4.74 - 5.10	C.I. & A/C M.E.	FCA501 - 5.10						
		5.11 - 5.30	A/C R.B.	FCA501 - 5.30						
	YELLOW	5.11 - 5.40	A/C R.B. CL. 200	FCA501 - 5.40						
6"	RED	5.80 - 6.10	O.D.	FCA501 - 6.10	296.44	369.18	390.32	436.72	47.27	28 #
		6.05 - 6.30	Riv. Stl.	FCA501 - 6.30						
		6.55 - 6.76	Std. Stl. & PVC	FCA501 - 6.76						
	BLACK	6.60 - 6.91	Std. Stl., D.I. & PVC	FCA501 - 6.91						
		6.90 - 7.10	Cast Iron & PVC	FCA501 - 7.10						
		6.86 - 7.20	C.I. & A/C M.E.	FCA501 - 7.20						
		7.15 - 7.35	A/C R.B.	FCA501 - 7.35						
	YELLOW	7.15 - 7.45	A/C R.B. CL. 200	FCA501 - 7.45						
8"	RED	7.80 - 8.10	O.D.	FCA501 - 8.10	407.47	473.72	501.35	547.75	57.19	34 #
		8.10 - 8.30	Riv. Stl.	FCA501 - 8.30						
		8.30 - 8.55	C.I. Soil, PVC Sewer	FCA501 - 8.55						
	BLACK	8.55 - 8.75	Std. Stl. & PVC	FCA501 - 8.75						
		8.60 - 9.06	Std. Stl., D.I. & PVC	FCA501 - 9.06						
		9.05 - 9.30	Cast Iron & PVC	FCA501 - 9.30						
		8.99 - 9.40	C.I. & A/C M.E.	FCA501 - 9.40						
		9.31 - 9.50	A/C R.B.	FCA501 - 9.50						
	YELLOW	9.51 - 9.70	A/C R.B. CL. 200	FCA501 - 9.70						
10"	RED	9.80 - 10.10 A	O.D.	FCA501 - 10.10	737.73	825.03 Pins: 7/8"	1,009.92	1,197.54	124.72	58 #
		10.20 - 10.55 A	C.I. Soil, PVC Sewer	FCA501 - 10.55						
		10.70 - 11.00 A	Std. Stl. & PVC	FCA501 - 11.00						
	BLACK	10.70 - 10.80 B [Ⓞ]	Std. Stl. & PVC	FCA501 - 10.80						
		10.89 - 11.40 B [Ⓞ]	Cast Iron & PVC	FCA501 - 11.40						
		11.55 - 11.75 B [Ⓞ]	A/C M.E.	FCA501 - 11.75						
		11.76 - 12.12 B [Ⓞ]	A/C R.B.	FCA501 - 12.12						
12"	RED	11.81 - 12.10 A	O.D. Stl.	FCA501 - 12.10	816.16	951.86 Pins: 7/8"	1,421.08	1,578.16	153.15	70 #
		12.65 - 12.95 A	Std. Stl. & PVC	FCA501 - 12.95						
		12.70 - 12.80 B	Std. Stl. & PVC	FCA501 - 12.80						
	BLACK	13.15 - 13.55 B	Cast Iron & PVC	FCA501 - 13.55						
		13.85 - 14.10 B	A/C M.E.	FCA501 - 14.10						
		14.05 - 14.40 B	A/C R.B.	FCA501 - 14.40						
16"	RED	16.00	O.D. Stl.	FCA501 - 16.00	1,148.49	NA	1,288.05	1,534.17	261.99	137 #
	BLACK	17.40	Ductile Iron & PVC	FCA501 - 17.40						

To Order: Add the letter "P" to end of catalog number for FCA501 with anchor pins and "X" for less flange bolts.

Example: **FCA501- 5.00 P** or **FCA501- 5.00 X**

***NOTE:** Harness Lugs used with Romac FCA501s require longer flange and through bolts than what are provided as standard with 3" - 12" FCA501s. 10" FCA501s require special considerations. Contact Romac Engineering for more information.

① CANNOT be used with mating flanges that have threaded bolt holes.

② Less flange bolts/nuts.

③ Submit pressure data when specifying pins. Pin quantity is dependant on pressure. Cannot be used on non-metallic pipe.



Flexible couplings do not provide protection against possible pullout of pipe ends in unrestrained conditions.



Style "FCA501" Parts List

NOM. PIPE SIZE	FLANGED BODY (with O-Ring)	END RING	COUPLING GASKET	O-RING GASKET	FLANGE BOLTS WITH NUTS				THROUGH BOLTS WITH NUTS			
					NUMBER: SIZE	PRICE EACH			NUMBER: SIZE	PRICE EACH		
						STD.	304 S.S.	316 S.S.		STD.	304 S.S.	316 S.S.
3"	\$84.75	\$10.75 ¹	\$4.75 ¹	\$7.79	NA	NA	NA	NA	4: 5/8" x 7 1/2"	\$19.03	\$25.41	\$34.19
4" x 3"	168.42	15.13 ¹	6.24	7.79	4: 5/8" x 3" ²	\$3.75	\$16.85	\$17.02	4: 5/8" x 3" ²	3.75	11.70	14.49
4"	119.89	15.13 ¹	6.24 ¹	8.41	4: 5/8" x 3" ²	3.75	16.85	17.02	4: 5/8" x 7 1/2"	19.03	25.41	34.19
6"	122.21	32.03	8.88 ¹	8.92	4: 3/4" x 3 1/2" ²	4.93	17.70	18.99	4: 3/4" x 8"	28.40	36.72	49.41
8"	221.56	39.32	13.27 ¹	10.08	4: 3/4" x 3 1/2" ²	4.93	17.70	18.99	4: 3/4" x 8"	28.40	36.72	49.41
10" A	425.58	50.81	27.55	11.28	6: 7/8" x 4"	8.86	43.66	52.08	6: 5/8" x 7 7/8" x 9 1/2"	30.11	40.67	63.52
10" B	425.58	50.81	27.55 ¹	11.28	6: 7/8" x 4"	8.86	43.66	52.08	6: 5/8" x 7 7/8" x 9 1/2"	30.11	40.67	63.52
12" A	454.66	59.94	35.22 ¹	12.67	6: 7/8" x 4"	8.86	43.66	52.08	6: 7/8" x 9"	35.53	101.55	119.31
12" B	454.66	59.94	35.22 ¹	12.67	6: 7/8" x 4"	8.86	43.66	52.08	6: 7/8" x 9"	35.53	101.55	119.31
16"	776.57	173.27	86.45	14.72	N/A	NA	NA	NA	12: 5/8" x 10 1/2" ³	9.35	20.98	41.49

¹ Parts are interchangeable with 501 couplings.

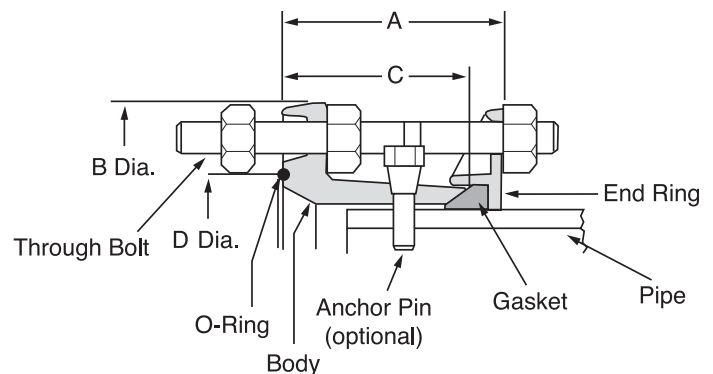
² T-head bolts.

³ Trackhead bolt for end ring only

Refer to page 2-3 for information on 10" and 12" center rings.

Stainless steel anchor pins available upon request.

NOM. PIPE SIZE	DIMENSIONS			
	A	B Dia.	C	D Dia.
3"	4 1/2"	7 1/2"	3 3/8"	4.66
4" x 3"	4 5/8"	9"	4 1/4"	4.66
4"	4"	9"	3 1/2"	6.00
6"	4 1/8"	11"	3 5/8"	7.90
8"	4 1/4"	13 1/2"	3 1/2"	10.00
10" A	5 1/4"	16"	4 1/4"	12.40
10" B	5 1/2"	16"	4 1/2"	12.40
12" A	5 1/4"	19"	4 1/2"	13.68
12" B	5 1/2"	19"	4 1/2"	15.20
16"	8"	23 1/2"	7"	18.88



WARNING: Flexible couplings do not provide protection against possible pullout of pipe ends in unrestrained conditions.

Stainless steel anchor pins available.
Contact factory for price and number required.



Fusion Epoxy Style "FCA501" Parts List

NOM. PIPE SIZE	FLANGED BODY (w/O-Ring)	END RING	COUPLING GASKET ⁴	O-RING GASKET ⁴	FLANGE BOLTS WITH NUTS			THROUGH BOLTS WITH NUTS				
					NUMBER: SIZE	PRICE EACH			NUMBER: SIZE	PRICE EACH		
						STD.	304 SS	316 SS		STD.	304 SS	316 SS
3"	\$106.73	\$16.69 ¹	N 21.61 E 21.96	N 7.49 E 7.69	N/A	N/A	N/A	N/A	4: 5/8" x 7 1/2"	\$19.03	\$25.41	\$34.19
4" x 3"	196.27	22.19 ¹	N 21.94 E 22.52	N 7.49 E 7.69	4: 5/8" x 3" ²	\$3.75	\$16.85	\$17.02	4: 5/8" x 3" ²	3.75	11.70	14.49
4"	147.74	22.19 ¹	N 21.94 E 22.52	N 8.09 E 8.30	4: 5/8" x 3" ²	3.75	16.85	17.02	4: 5/8" x 7 1/2"	19.03	25.41	34.19
6"	157.00	44.51	N 25.86 E 27.05	N 8.58 E 8.78	4: 3/4" x 3 1/2" ²	4.93	17.70	18.99	4: 3/4" x 8"	28.40	36.92	49.41
8"	256.37	61.70	N 31.15 E 35.01	N 9.69 E 9.94	4: 3/4" x 3 1/2" ²	4.93	17.70	18.99	4: 3/4" x 8"	28.40	36.92	49.41
10"A	490.77	110.34	N 43.39 E 50.64	N 10.85 E 11.13	6: 7/8" x 4"	8.86	43.66	52.08	6: 5/8" x 7/8 x 9 1/2"	30.11	40.67	63.52
10"B	490.77	110.34	N 43.39 E 50.64	N 10.85 E 11.13	6: 7/8" x 4"	8.86	43.66	52.08	6: 5/8" x 7/8 x 9 1/2"	30.11	40.67	63.52
12"A	535.46	132.29	N 54.34 E 63.06	N 12.18 E 11.94	6: 7/8" x 4"	8.86	43.66	52.08	6: 7/8" x 9"	35.53	101.55	119.31
12"B	535.46	132.29	N 54.34 E 63.06	N 12.18 E 11.94	6: 7/8" x 4"	8.86	43.66	52.08	6: 7/8" x 9"	35.53	101.55	119.31
16"	956.08	255.75	N 126.76 E 152.41	N 14.15 E 14.50	N/A	N/A	N/A	N/A	12: 5/8"x10 1/2" ³	9.35	20.98	41.49

¹ Parts are interchangeable with 501 couplings.

² T-head bolts.

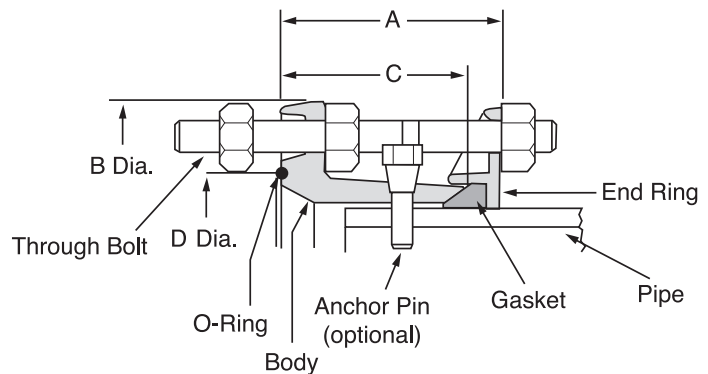
³ Trackhead bolt for end ring only

⁴ "N" indicates an NBR gasket, "E" indicates an EPDM gasket

Refer to page 2-3 for information on 10" and 12" center rings.

Stainless steel anchor pins available upon request.

NOM. PIPE SIZE	DIMENSIONS			
	A	B Dia.	C	D Dia.
3"	4 1/2"	7 1/2"	3 3/8"	4.66
4" x 3"	4 5/8"	9"	4 1/4"	4.66
4"	4"	9"	3 1/2"	6.00
6"	4 1/8"	11"	3 5/8"	7.90
8"	4 1/4"	13 1/2"	3 1/2"	10.00
10"A	5 1/4"	16"	4 1/4"	12.40
10"B	5 1/2"	16"	4 1/2"	12.40
12"A	5 1/4"	19"	4 1/2"	13.68
12"B	5 1/2"	19"	4 1/2"	15.20
16"	8"	23 1/2"	7"	18.88



WARNING: Flexible couplings do not provide protection against possible pullout of pipe ends in unrestrained conditions.

Stainless steel anchor pins available.
Contact factory for price and number required.