



Romac "Ductile Lug"

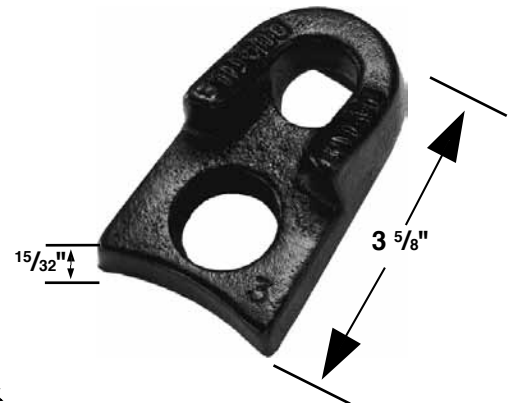
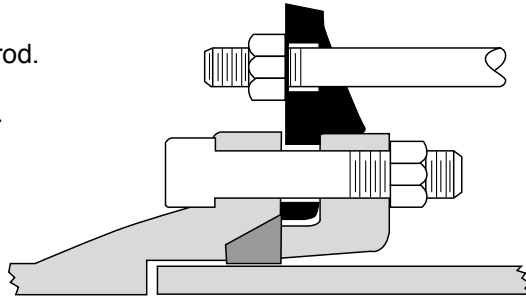
Material Specifications

Lug: Ductile iron per ASTM A 536, Grade 65-45-12.

Use: Restraint for use on MJ fittings 4" - 24".

Accommodates 3/4" rod.

Max. Load: 7,500 lbs.



CATALOG NUMBER	APPROX. WEIGHT (lbs.)	LIST PRICE
Ductile Lug	.844 #	\$3.91

Ductile lugs are packaged 50 per box. **To Order:** Specify catalog number.

90° Eye Bolt

Material Specifications

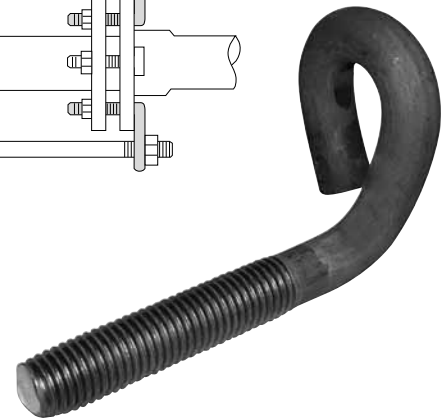
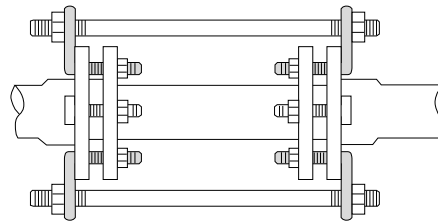
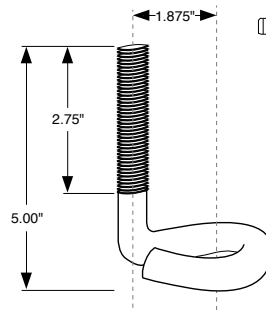
Eye Bolt: 3/4" UNC rolled thread, high strength, low alloy steel per AWWA C111 (Corten or Mayari-R).

Nut and Washer: 3/4" heavy hex, high strength low alloy steel.

Use: Restraint for use on MJ fittings 4" - 24".

Accommodates 3/4" rod.

Max. Load: 7,500 lbs.



ITEM	CATALOG NUMBER	LIST PRICE EACH per QUANTITY					APPROX. WEIGHT (lbs.)
		1 - 200	400	600	800	1000	
3/4" Eye-Bolts	EYE-3/4	\$9.81	\$9.74	\$9.67	\$9.58	\$9.46	200 # / crate
3/4" Nuts	HH-3/4	1.55	1.49	1.44	1.37	1.30	40 # / crate
3/4" Washers	WASHER-3/4	1.37	1.29	1.29	1.23	1.14	4 # / 100

Bolts and nuts are packaged 200 per crate. **To Order:** Specify catalog number.