



“FTS419” Fabricated Steel Tapping Sleeve

Material Specifications

Body and Outlet Nozzle: Carbon steel, A-36 or equal.

Bolts and Nuts: Trackhead bolts, heavy hex nuts, 5/8" UNC rolled thread, high strength, low alloy, steel per AWWA C111. Optional stainless steel, type 304.

Gaskets: SBR per ASTM D 2000 MBA 710, compounded for water and sewer service use. Other compounds available on request.

Coating: Fusion epoxy 8-12 mil. lined and coated. Other coatings available. Romac packages sleeves to protect coating.

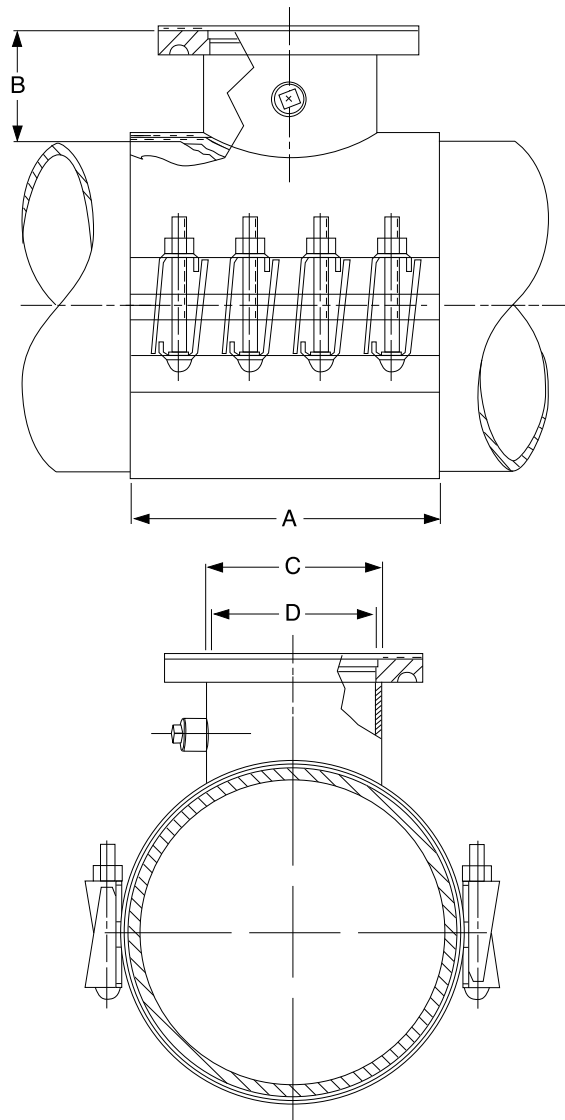
Flange: AWWA Class “D” plate flange, ANSI Class 150 drilling, proper recessing for tapping valves. Will accommodate tapping flanges per MSS SP-60.

Use: Recommended for PVC, steel, D.I., copper pipe.

Meets requirements of MSS SP-124 and AWWA C223



FLANGE SIZE	A	B	C	D	BOLTS
					QTY: SIZE
3"	9"	5.18"	4.031"	3.5"	6: 5/8" x 6"
4"	9"	5.18"	5.031"	4.5"	6: 5/8" x 6"
6"	12"	5.18"	7.031"	6.5"	8: 5/8" x 6"
8"	15"	5.18"	9.031"	8.5"	10: 5/8" x 6"
10"	18"	5.50"	11.031"	10.5"	12: 5/8" x 6"
12"	24"	5.75"	13.031"	12.5"	16: 5/8" x 6"





1-800-426-9341



“FTS419” Fabricated Steel Tapping Sleeve

NOMINAL PIPE SIZE	SLEEVE O.D. (INCHES)	CATALOG NUMBER			LIST PRICE EACH		APPROX. WEIGHT (lbs.)
		SLEEVE NUMBER	BY	BRANCH SIZE	W/ALLOY BOLTS	W/304 SS BOLTS & NUTS	
4"	4.00 4.13	FTS419-4.00 FTS419-4.13	X	3" *	\$584.88	\$643.51	28#
	4.50 4.80	FTS419-4.50 FTS419-4.80	X	3" * 4" *	584.88 584.88	644.55 644.55	34# 34#
5"	5.13 5.56	FTS419-5.13 FTS419-5.56	X	3" * 4" *	584.88 584.88	644.55 644.55	33# 35#
	6.00 6.13	FTS419-6.00 FTS419-6.13	X	3" 4"	602.92 602.92	662.60 662.60	34# 36#
6"	6.63 6.90	FTS419-6.63 FTS419-6.90	X	3" 4" 6" *	602.92 602.92 672.32	662.60 662.60 746.24	34# 36# 53#
	8.00 8.13	FTS419-8.00 FTS419-8.13	X	3" 4" 6"	648.29 648.29 697.77	707.97 707.97 771.71	34# 38# 55#
	8.63 9.05	FTS419-8.63 FTS419-9.05	X	3" 4" 6" 8" *	648.29 648.29 697.77 852.80	707.97 707.97 771.71 940.91	38# 40# 56# 77#
10"	10.00	FTS419-10.00	X	3" 4" 6" 8"	649.85 649.85 721.03 889.40	709.54 709.54 794.96 977.52	38# 41# 58# 79#
	10.75 11.10	FTS419-10.75 FTS419-11.10	X	3" 4" 6" 8" 10" *	649.85 649.85 721.03 889.40 1,183.29	709.54 709.54 794.96 977.52 1,285.62	41# 43# 60# 81# 108#
12"	12.75 13.20	FTS419-12.75 FTS419-13.20	X	3" 4" 6" 8" 10" 12" *	689.19 689.19 785.09 948.60 1,250.00 1,485.17	748.89 748.89 859.00 1,036.71 1,352.31 1,615.91	44# 46# 64# 85# 111# 129#
	14.00 15.30	FTS419-14.00 FTS419-15.30	X	3" 4" 6" 8" 10" 12"	759.28 762.40 841.91 1,017.85 1,445.31 1,626.14	908.25 908.25 887.63 1,250.61 1,696.88 1,886.46	47# 49# 67# 88# 114# 136#
16"	16.00 17.40	FTS419-16.00 FTS419-17.40	X	3" 4" 6" 8" 10" 12"	792.92 792.92 888.74 976.50 1,496.49 1,716.51	940.27 980.71 1,040.08 1,294.02 1,751.20 1,981.23	50# 52# 71# 92# 117# 144#
	18.00 19.50	FTS419-18.00 FTS419-19.50	X	3" 4" 6" 8" 10" 12"	814.68 814.68 915.99 1,113.10 1,558.60 1,742.67	963.08 963.08 1,069.31 1,350.55 1,815.66 2,008.66	56# 57# 76# 96# 120# 160#
20"	20.00 21.60	FTS419-20.00 FTS419-21.60	X	3" 4" 6" 8" 10" 12"	836.45 836.45 943.22 1,203.54 1,620.68 1,766.55	985.92 985.92 1,097.87 1,407.09 1,880.75 2,036.06	56# 58# 78# 100# 123# 160#
	24.00 25.80	FTS419-24.00 FTS419-25.80	X	3" 4" 6" 8" 10" 12"	960.62 960.62 1,082.65 1,402.85 1,882.08 2,008.40	1,116.12 1,116.12 1,244.05 1,616.10 2,154.87 2,287.30	63# 64# 86# 107# 130# 176#

To Order: Specify catalog number by the desired O.D. and flange size. Add S.S. for optional 304 stainless steel bolts and nuts. Some O.D.s not listed are available on request.

Example: FTS419 - 6.90 x 6 - SSFE

* For size on size taps, a 1/2" undersized shell cutter is required.

Test plugs furnished on all applicable models, and are stainless steel when tapping sleeve is ordered with S.S. bolts & nuts.