



# “FTS425” Steel Fabricated Tapping Sleeve

**Material Specifications**

- Body and Outlet Nozzle:** Carbon steel, A-36 or equal.
  - Bolts and Nuts:** Trackhead bolts, heavy hex nuts, UNC rolled thread, high strength, low alloy, steel per AWWA C111. Optional stainless steel, type 304.
  - Gaskets:** SBR per ASTM D 2000 MBA 710, compounded for water and sewer service use. Other compounds available on request.
  - Paint:** Romac shopcoat for corrosion protection in transit. Optional fusion epoxy 8-12 mil. lined and coated. Other coatings available. Romac packages sleeves to protect any special coatings.
  - Flange:** AWWA Class “D” plate flange, ANSI Class 150 drilling, proper recessing for tapping valves. Will accommodate tapping flanges per MSS SP-60.
- Meets requirements of MSS SP-124 and AWWA C223

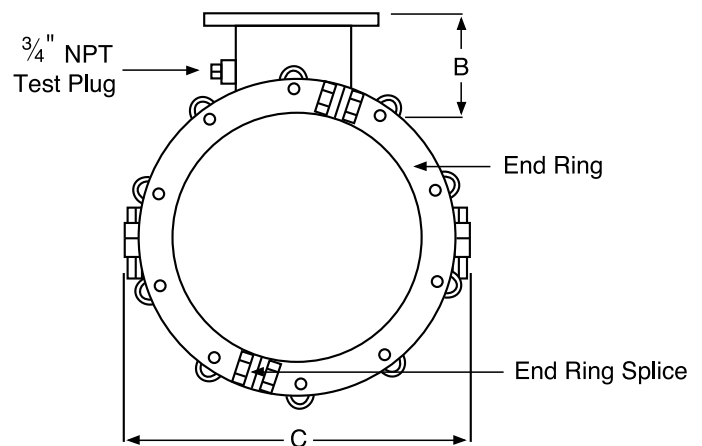
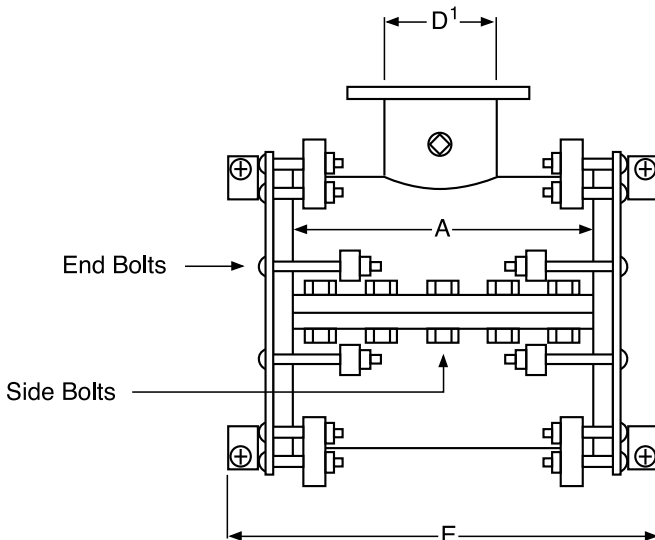


The Romac steel sleeve with side and end gasket seals provides extra protection on lines subject to excessive beam loads.

**Fabricated to special order only**

- Exact O.D. of pipe required
- No range provided
- Price on application

Contact Romac Engineering for high pressure and larger than 24" pipe applications



<sup>1</sup> For D dimension: 4" - 12" flanges will accommodate tapping flanges per MSS SP-60.



# “FTS425” Steel Fabricated Tapping Sleeve

NOM. PIPE SIZE	PIPE O.D.	FLANGE SIZE	A	B	C	E	SIDE BOLTS QTY: SIZE	END BOLTS QTY: SIZE	APPROX. WEIGHT (lbs.)
12"	Ductile Iron 13.20	4" 6" & 8" 10" & 12"	15.3 19.0 22.8	6.00 6.00 6.00	18.38 18.38 18.38	22.36 26.13 29.90	8: 1" 10: 1" 12: 1"	16: 5/8" 16: 5/8" 16: 5/8"	217# 261# 325#
	Cast Iron 13.50	4" 6" & 8" 10" & 12"	15.3 19.0 22.8	6.00 6.00 6.00	18.68 18.68 18.68	22.36 26.13 29.90	8: 1" 10: 1" 12: 1"	16: 5/8" 16: 5/8" 16: 5/8"	220# 264# 329#
	A/C 13.55	4" 6" & 8" 10" & 12"	15.3 19.0 22.8	6.00 6.00 6.00	18.73 18.73 18.73	22.36 26.13 29.90	8: 1" 10: 1" 12: 1"	16: 5/8" 16: 5/8" 16: 5/8"	221# 264# 329#
14"	Ductile Iron 15.30	4" 6" & 8" 10" & 12"	15.3 19.0 22.8	6.00 6.00 6.00	20.48 20.48 20.48	22.36 26.13 29.90	8: 1" 10: 1" 12: 1"	20: 5/8" 20: 5/8" 20: 5/8"	241# 288# 355#
	Cast Iron 15.55	4" 6" & 8" 10" & 12"	15.3 19.0 22.8	6.00 6.00 6.00	20.83 20.83 20.83	22.36 26.13 29.90	8: 1" 10: 1" 12: 1"	20: 5/8" 20: 5/8" 20: 5/8"	244# 291# 358#
	A/C 15.65	4" 6" & 8" 10" & 12"	15.3 19.0 22.8	6.00 6.00 6.00	20.73 20.73 20.73	22.36 26.13 29.90	8: 1" 10: 1" 12: 1"	20: 5/8" 20: 5/8" 20: 5/8"	244# 292# 360#
16"	Ductile Iron 17.40	4" 6" & 8" 10" & 12"	15.3 19.0 22.8	6.00 6.00 6.00	22.58 22.58 22.58	22.36 26.13 29.90	8: 1" 10: 1" 12: 1"	20: 5/8" 20: 5/8" 20: 5/8"	261# 311# 388#
	A/C 17.55	4" 6" & 8" 10" & 12"	15.3 19.0 22.8	6.00 6.00 6.00	22.98 22.98 22.98	22.36 26.13 29.90	8: 1" 10: 1" 12: 1"	20: 5/8" 20: 5/8" 20: 5/8"	265# 316# 387#
	Cast Iron 17.80	4" 6" & 8" 10" & 12"	15.3 19.0 22.8	6.00 6.00 6.00	22.73 22.73 22.73	22.36 26.13 29.90	8: 1" 10: 1" 12: 1"	20: 5/8" 20: 5/8" 20: 5/8"	263# 313# 384#
18"	Ductile Iron 19.50	4" & 6" 8", 10" & 12"	18.3 23.0	6.00 6.00	24.68 24.68	25.42 30.10	8: 1 1/8" 10: 1 1/8"	24: 5/8" 24: 5/8"	338# 430#
	Cast Iron 19.92	4" & 6" 8", 10" & 12"	18.3 23.0	6.00 6.00	25.10 25.10	25.42 30.10	8: 1 1/8" 10: 1 1/8"	16: 5/8" 24: 5/8"	343# 435#
	A/C 20.50	4" & 6" 8", 10" & 12"	18.3 23.0	6.00 6.00	25.68 25.68	25.42 30.10	8: 1 1/8" 10: 1 1/8"	24: 5/8" 24: 5/8"	349# 443#
20"	Ductile Iron 21.60	4" & 6" 8", 10" & 12"	18.4 23.0	6.00 6.00	27.78 27.78	25.49 30.10	8: 1 1/4" 10: 1 1/4"	24: 5/8" 24: 5/8"	395# 500#
	Cast Iron 22.06	4" & 6" 8", 10" & 12"	18.4 23.0	6.00 6.00	28.24 28.24	25.49 30.10	8: 1 1/4" 10: 1 1/4"	24: 5/8" 24: 5/8"	400# 505#
	A/C 22.70	4" & 6" 8", 10" & 12"	18.4 23.0	6.00 6.00	28.88 28.88	25.49 30.10	8: 1 1/4" 10: 1 1/4"	24: 5/8" 24: 5/8"	410# 515#
24"	Ductile Iron 25.80	4" & 6" 8", 10" & 12"	18.4 23.0	6.00 6.00	31.98 31.98	25.49 30.10	8: 1 1/4" 10: 1 1/4"	28: 5/8" 28: 5/8"	446# 558#
	Cast Iron 26.32	4" & 6" 8", 10" & 12"	18.4 23.0	6.00 6.00	32.50 32.50	25.49 30.10	8: 1 1/4" 10: 1 1/4"	28: 5/8" 28: 5/8"	452# 565#
	A/C 27.15	4" & 6" 8", 10" & 12"	18.4 23.0	6.00 6.00	33.33 33.33	25.49 30.10	8: 1 1/4" 10: 1 1/4"	28: 5/8" 28: 5/8"	460# 576#

All prices POA.

Sizes not listed are available on request.



No Cancel, No Return Item