



Transmate

1-800-426-9341

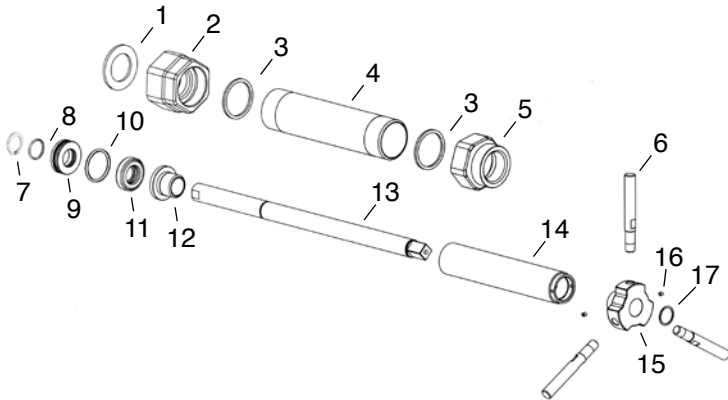


5935™ Pipe Drilling Machine

Material Specifications

- Weighs approximately 40 lbs.
- 3/4" to 2" range of cuts using a corporation stop and saddle
- Cuts all types of water mains, wet and dry

**3/4" to 2"
range of cuts**



REF NO.	DESCRIPTION	ITEM NO.	LIST PRICE
1	Adapter Gasket	355-57-05	\$13.79
2	Bottom Cylinder Coupling	355-37	186.71
3	Top & Bottom Cylinder Gaskets (2 req.)	355-38-57	ea 9.92
4	Cylinder	355-38	178.77
5	Top Cylinder Coupling	355-36	308.75
6	Handle for Lead Nut (3 req.)	350-29	83.93
7	Shaft End Snap Ring	350-20-54	10.81
8	Collar O-Ring (inside)	355-40-5711	1.91
9	Collar	355-40	90.77
10	Collar O-Ring (outside)	355-40-5712	1.91
11	Thrust Bearing	355-56	37.86
12	Feed Screw (bottom)	355-43-2	115.51
13	Drill Holder	355-12	283.02
14	Feeder Screw	355-43	356.97
15	Tri-Handle Holder	355-29-1	176.43
16	Set Screw	351-23-512	1.12
17	Spiral Snap Ring	355-54	5.65
Not Illustrated:			
	Ratchet Wrench	355-60-1	313.86
	Adjustable Wrench	355-60-4	96.69
	1/8" Allen Wrench	355-60-3	2.55
	Tapping Compound	353-10-1	28.80
	Tool Box	355-61	189.78

All items above are included with the 5935 Drilling Machine. All other items must be ordered separately.

To Order:

- | | |
|--|----------------------------------|
| 1. Order Base Machine | 3. Order Adapters |
| 2. Order Drills or Holesaws per desired cut size and pipe type | 4. Order Power Option if desired |

ITEM NUMBER	DESCRIPTION	LIST PRICE	
355-00	5935 Pipe Drilling Machine	\$2,064.19	
	Included with 5935 Machine:		
355-60-4	Adjustable Wrench SPUD	included	
355-60-1	Ratchet Wrench	included	
355-61	Tool Box	included	
355-60-3	1/8" Allen Wrench	included	
353-10-1	Tapping Compound	included	
Drill			
For Ductile, Cast Iron, A/C & Steel	354-01-06	3/4" Drill: 5933 (actual OD 11/16") Requires Drill Adapter 355-12-06	149.18
	355-01-408	1" Drill: 5937-1 (actual OD 7/8")	374.25
	355-01-410	1 1/4" Drill: 5937-1 (actual OD 1 1/8")	378.03
	355-01-412	1 1/2" Drill: 5937 (actual OD 1 7/16")	380.82
	355-01-416	2" Drill: 5937-1 (actual OD 1 3/4")	503.38
355-04-4	2.5 Drill Extension (Used when doing a 2" tap through a threaded gate valve)	202.95	
PVC			
For PVC only	351-01-206	3/4" PVC Cutter (actual OD 11/16")	111.64
	351-01-208	1" PVC Cutter (actual OD 15/16")	114.16
	351-01-210	1 1/4" PVC Cutter (actual OD 1 1/8")	125.59
	351-01-212	1 1/2" PVC Cutter (actual OD 1 3/8")	136.98
	351-01-216	2" PVC Cutter (actual OD 1 7/8")	148.41
355-12-06	Adapter: 5938 (use with 3/4", 1" PVC Holesaws includes 354-04-3 Adapter)	333.72	
355-04-3	Large PVC Adapter: 9546 (use with 1 1/2" & 2" PVC Cutters)	161.72	

ITEM NUMBER	DESCRIPTION	LIST PRICE
Adapters		
355-05-406	3/4" Female Iron Pipe Adapter: 5936-3	220.54
355-05-408	1" Female Iron Pipe Adapter: 5936-3	220.54
355-05-410	1 1/4" Female Iron Pipe Adapter: 5936-3	220.54
355-05-412	1 1/2" Female Iron Pipe Adapter: 5936-1	220.54
355-05-416	2" Female Iron Pipe Adapter: 5936-1	220.54
355-05-420	2 1/2" Female Iron Pipe Adapter: 5936-1	220.54
355-05-506	3/4" Flare Copper Adapter: 5936-2	220.54
355-05-508	1" Flare Copper Adapter: 5936-2	220.54
355-05-510	1 1/4" Flare Copper Adapter: 5936-2	220.54
355-05-512	1 1/2" Flare Copper Adapter: 5936	220.54
355-05-706	3/4" 110 Compression Connection	235.24
355-05-708	1" 110 Compression Connection	235.24
355-05-712	1 1/2" 110 Compression Connection	235.24
355-05-716	2" 110 Compression Connection	235.24

*** Special Adapters can be made per request ***

Note: Female Adapters thread into Part No. 355-37 except the 2 1/2" Female Iron Pipe Adapter which will replace Part No. 355-37. The 355-37 fits 2" Flare Copper Corporation Stops, no 2" Flare Adapter is required.

ITEM NUMBER	DESCRIPTION	LIST PRICE
Tapping Compound		
353-10-1	Tapping Compound	28.80
353-10-3	Tapping Compound / Case (12)	332.15
Power Option		
373-355	Ridgid 690 Electric Drive w/ 7/8" sq. drive adapter See pg. TM-29	2,613.02
370-70	GF-15 Ground Fault Interrupter Plug (required)	111.82