



Transmate

1-800-426-9341



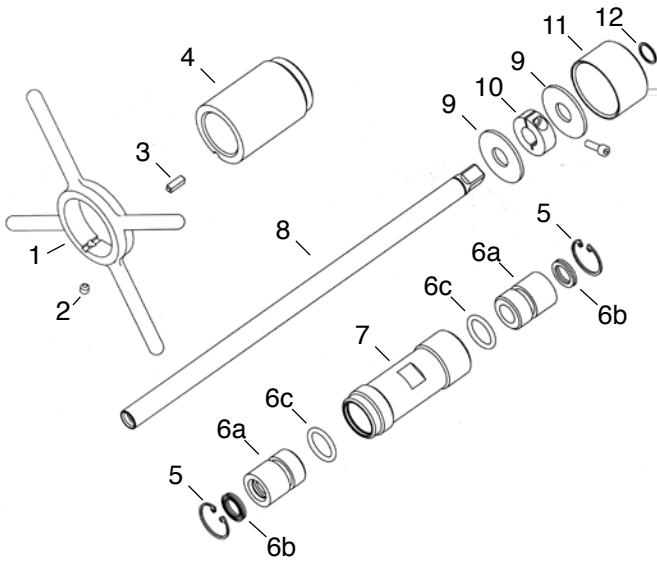
M-1™ Pipe Drilling Machine

Material Specifications

- Weighs approximately 10 lbs and easy to handle, 14" long
- 3/4" to 1" range of cuts using a separate corporation stop and saddle
- Cuts all types of water mains, wet and dry
- Easy to set up and use
- Uses TapMate Too adapters, arbor and ratchet



**3/4" to 1"
range of cuts**



To Order:

1. Order Base Machine
2. Order Cutters or Spade Bits per desired cut size and pipe type
3. Order Adapters per size and corp outlet type
4. Order Small Holesaw Arbor
5. Power Option if desired

REF NO.	DESCRIPTION	ITEM NO.	LIST PRICE
1	Handle for Lead Nut	351-29-1	\$138.20
2	Arbors & Handle Set Screw	351-51-2	1.12
3	Lead Nut Key	351-24-66	4.41
4	M1 Feeder	352-24	116.50
5	Lead Tube Snap Ring	351-23-54	2.18
6	Lead Tube Bushing Complete	351-22-2A	68.51
6a	Lead Tube Bushing	351-22-2	62.77
6b	Poly Pak Seal	351-57-2	5.69
6c	Lead Tube Bushing O-Ring	351-57-1-62	1.12
7	Body	352-23	150.46
8	Shaft, Main	352-20	142.40
9	Thrust Washer	352-53-1	15.10
10	Clamp	352-63	25.17
11	Bronze Cap	352-35	120.58
12	Retaining Snap Ring	352-54	2.51

ITEM NUMBER	DESCRIPTION	LIST PRICE
352-00	M-1 Drilling Machine	\$1,093.08
	Included with M1 Machine:	
351-60-1	Ratchet Wrench	included
352-60-3	5/32" Allen Wrench	included
352-61	Tool Box	included
353-10-1	Tapping Compound	included
	Holesaws (require Small Holesaw Arbor)	
351-01-106	3/4" Carbide Cutter (actual OD 11/16")	107.32
351-01-108	1" Carbide Cutter (actual OD 7/8")	120.97
351-01-406	3/4" HSS Carbide Tip Holesaw (actual OD 11/16")	37.66
351-01-408	1" HSS Carbide Tip Holesaw (actual OD 7/8")	44.30
351-01-506	3/4" Bimetal Holesaw ¹	21.19
351-01-508	1" Bimetal Holesaw ¹	23.97
351-01-206	3/4" Cutter for PVC (actual OD 11/16")	111.64
351-01-208	1" Cutter for PVC (actual OD 7/8")	114.16
	Spade Bits	
351-03-12	Spade Bit Holder	233.96
351-03-106	3/4" Spade Bit (actual OD 11/16")	65.29
351-03-108	1" Spade Bit (actual OD 23/32")	68.51
351-60-5	Torx Key Wrench	6.86

For Ductile Cast Iron & A/C

For PVC only

ITEM NUMBER	DESCRIPTION	LIST PRICE
	Adapters	
351-05-406	3/4" Female Iron Pipe Adapter	\$117.70
351-05-408	1" Female Iron Pipe Adapter	117.70
351-05-506	3/4" Flare Copper Adapter	117.70
351-05-508	1" Flare Copper Adapter	117.70
351-05-606	3/4" Male Iron Pipe Adapter	117.70
351-05-608	1" Male Iron Pipe Adapter	117.70
351-05-706	3/4" 110 Compression Connection	117.70
351-05-708	1" 110 Compression Connection	117.70
	Special adapters can be made upon request	
	Arbor	
351-14-1	Small Holesaw Arbor, (includes Arbor Pilot Drill 351-01-402) (use with 3/4" and 1" cutters / holesaws)	73.08
351-01-402	1/4" Arbor Pilot Drill (for small holesaw arbors) included w/ large & small arbors	15.59
	Power Option	
373-351	Rigid 690 Electric Drive w/1/2" sq. adapter	2,613.02
370-70	GF-15 Ground Fault Interrupter Plug (required)	111.82
	Tapping Compound	
353-10-1	Tapping Compound	28.80
353-10-3	Tapping Compound / Case (12)	332.15

¹Recommended for Steel Pipe