



Transmate

1-800-426-9341



TapMate Dry Tap™ Dry Drilling and Tapping Machine

Material Specifications

- Weighs approximately 28 lbs.
- Easy to use, with or without power drive
- 3/4" through 1" drill/taps through all types of mains
- Drilling shaft is completely supported at two points for rigidity
- Uses B-1 drill/tap holder and accessories
- Lightweight and sturdy construction
- Conforms to pipe sizes 3" or larger (Extra chain lengths required for 18" mains or larger)

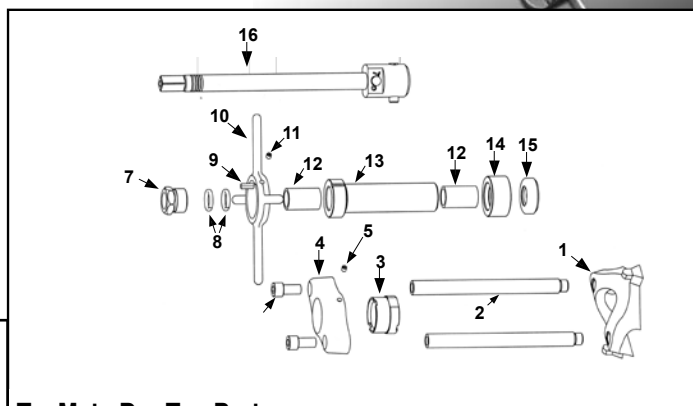
3/4" to 1" range of cuts



To Order:

1. Order Base Machine
2. Order Drill/Taps per cut size, thread type and tap size
3. Order Power Option if desired

ITEM NUMBER	DESCRIPTION	LIST PRICE
357-00	TapMate Dry Tap	\$2,168.58
	Included with Dry Tap Machine:	
353-60-11	Ratchet Wrench (5/8" sq. drive)	included
357-55	Delta ring chain assembly	included
353-11-1	Drill Tap Holder	included
353-60-22	1 5/16" Open End Wrench	included
353-60-32	1/4" Allen Wrench	included
353-10-1	Tapping Compound	included
355-61	Tool Box	included
Optional Straps Available		
357-66	48" Strap (includes Strap Ratchet)	178.00
357-100	Long Strap (for 14" to 24" diameter mains)	111.28
356-11	Chain, Round Link	60.90
	Call for longer straps	
PVC Drill and Taps (require both tap and cutter)		
For PVC only	353-04-206 3/4" PVC Tap: 5956 (AWWA thread)	370.76
	355-01-210 3/4" PVC Cutter - 5957-3/4"	264.65
	353-04-208 1" PVC Tap: 5956 (AWWA thread)	428.66
	353-01-206 1" PVC Cutter: 5975-1 (makes 1 1/4" hole)	265.28
Drill/Taps		
For Ductile, Cast Iron & A/C	353-02-106 3/4" Iron Pipe Drill/Tap: 5951	388.41
	353-02-108 1" Iron Pipe Drill/Tap: 5951	411.95
	353-02-206 3/4" AWWA Drill/Tap: 5952	274.87
	353-02-208 1" AWWA Drill/Tap: 5952	375.84
Power Option		
373-357	Ridgid 690 Electric Drive w/ 5/8" sq. Drive Adapter See pg TM-29	2,613.02
370-70	GF-15 Ground Fault Interrupter Plug (req.d)	111.82
Tapping Compound		
353-10-1	Tapping Compound	28.80
353-10-3	Tapping Compound/ Case (12)	332.15

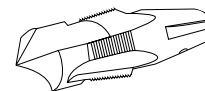
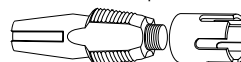


TapMate Dry Tap Parts

Ref. Number	Item Number	Description	List Price
1	357-08	Saddle	\$151.44
2	357-35	Column	66.15
3	357-28-1	Top Yoke Insert	117.33
4	357-28	Top Yoke	260.98
5	351-23-512	Lead Tube Set Screw	1.12
6	357-35-51	Column Bolts (Qty 2)	ea 6.15
7	353-26-39	Head Gland Nut	57.32
8	353-26-573	Head Gland Packing (Qty 2)	ea 8.04
9	351-24-66	Lead Nut Key	4.41
10	351-29-1	Handle	138.20
11	351-51-2	Arbors & Handle Set Screw	1.12
12	353-26-62	Head Bronze Bushing (Qty 2)	ea 22.90
13	357-43	Feed Screw Complete	311.70
14	357-22	Bearing Housing	111.74
15	357-56	Thrust Bearing	24.43
16	353-11-1	Drill/Tap Holder Assembly	557.83

Cutting Drill/Taps

355-01-210 PVC Cutter 3/4"
353-04-206 PVC Tap 3/4"



353-01-206 PVC Cutter 1"
353-04-208 PVC Tap 1"

Iron Pipe Drill / Tap
AWWA Drill / Tap