



Transmate

1-800-426-9341



TapMate™

3" to 12" Range of Cuts

Material Specifications

- **LATERAL TAPS** - For 3" - 12" lateral taps.
- **LIGHTWEIGHT** - Weighs 65 lbs., allowing easy handling and operation
- **EASY-TO-USE** - No hidden gears or mechanisms. Simple control and the depth scale is always visible.
- **PIPE COMPATIBILITY** - Taps any pipe commonly used in underground water mains
- **EASY TO MAINTAIN** - Simple construction allows in-house maintenance and repair
- **FLEXIBLE** - Use with hydraulic, electric or air drive units.



To Order:

1. Order Base Machine
2. Order Cutters per size
3. Order Adapters per size and outlet type
4. Order Extra Spade Bit (350-03-08) if doing A/C taps
5. If doing 10" and 12" taps, you must order Pilot Drill Extension (350-14)
6. Select Power Unit (see compatible power units on pages TM-26 - TM-28)

ITEM NUMBER	DESCRIPTION	LIST PRICE	ITEM NUMBER	DESCRIPTION	LIST PRICE		
350-00	TapMate™ Base Machine & Storage Box For lateral tapping	\$9,600.29	Shell Cutters				
	Included with Tapmate Machine:			Actual Size			
350-21-A	1" Shaft Nose (used for 3" - 8" cuts)	included	For Ductile, Cast Iron, Steel, A/C & PVC	350-01-1024	3" Carbide Cutter	2 1/2"	463.88
350-03-08	1" Spade Bit	"		350-01-1032	4" Carbide Cutter	3 1/2"	603.13
350-04	PVC Pilot (required for any plastic pipe taps)	"		350-01-1048	6" Carbide Cutter	5 1/2"	893.96
350-61	Storage Box	"		350-01-1064	8" Carbide Cutter	7 1/2"	1,182.42
353-10-1	Tapping Compound	"		350-01-1080 ¹	10" Carbide Cutter	9 1/2"	2,640.28
				350-01-1096 ¹	12" Carbide Cutter	11 1/2"	3,122.92
			For HDPE & PVC	350-01-2024 ²	3" Cutter for HDPE & PVC Pipe	2 1/2"	462.67
				350-01-2032 ²	4" Cutter for HDPE & PVC Pipe	3 1/2"	601.72
				350-01-2048 ²	6" Cutter for HDPE & PVC Pipe	5 1/2"	891.79
				350-01-2064 ²	8" Cutter for HDPE & PVC Pipe	7 1/2"	1,177.29
				350-01-2080 ^{1,2}	10" Cutter for HDPE & PVC Pipe	9 1/2"	2,633.70
				350-01-2096 ^{1,2}	12" Cutter for HDPE & PVC Pipe	11 1/2"	3,116.40
			For Steel	350-01-5024	3" Cutter for Steel	2 1/2"	463.79
				350-01-5032	4" Cutter for Steel	3 1/2"	603.13
				350-01-5048	6" Cutter for Steel	5 1/2"	893.96
				350-01-5064	8" Cutter for Steel	7 1/2"	1,182.42
				350-01-5080 ¹	10" Cutter for Steel	9 1/2"	2,640.28
				350-01-5096 ¹	12" Cutter for Steel	11 1/2"	3,124.31
360-00	QuikValve™ Base Machine For lateral tapping, QuikValve™ & InsertaValve™ installations	See Page QV-5 for pricing.	NOTE: Shell Cutters can be resharpened, and retooled				
	For QuikValve see QV-2 & InsertaValve see QV-7		Accessories				
			350-03-08	1" Spade Bit		87.38	
			350-21-A	Shaft Nose (includes 1" Spade Bit)		327.72	
			350-14 ¹	Pilot Drill Extension (required for 10" and 12" taps)		130.71	
			350-04	PVC Pilot		165.00	
			350-04H	HDPE Pilot		331.84	
			350-05-571	Adapter Bell O-Ring		14.92	
			350-05-512	Adapter Set Screw		6.03	
			Please call Romac for recommendations on ordering and using HDPE Holesaws				
			1 10" and 12" Cutters require the Pilot Drill Extension				
			2 HDPE Pilot needed (350-04H) if tapping HDPE pipe only				
Adapter Bells							
350-05-1024	3" MJ Adapter Bell	432.66					
350-05-1032	4" MJ Adapter Bell	492.73					
350-05-1048	6" MJ Adapter Bell	567.26					
350-05-1064	8" MJ Adapter Bell	668.11					
350-05-1080	10" MJ Adapter Bell	873.99					
350-05-1096	12" MJ Adapter Bell	983.68					
350-05-2024	3" 125# Flange Adapter Bell	414.96					
350-05-2032	4" 125# Flange Adapter Bell	492.73					
350-05-2048	6" 125# Flange Adapter Bell	581.58					
350-05-2064	8" 125# Flange Adapter Bell	668.64					
350-05-2080	10" 125# Flange Adapter Bell	1,201.51					
350-05-2096	12" 125# Flange Adapter Bell	1,310.91					

Adapter Bells for both metric and push-on style pipe connections are also available.
Special Adapter Bells can be made upon request



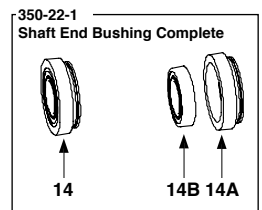
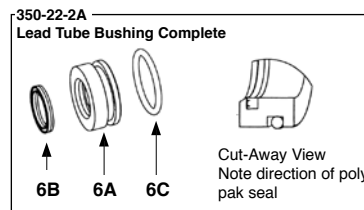
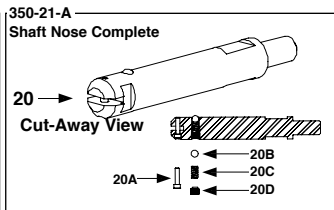
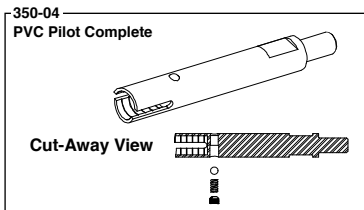
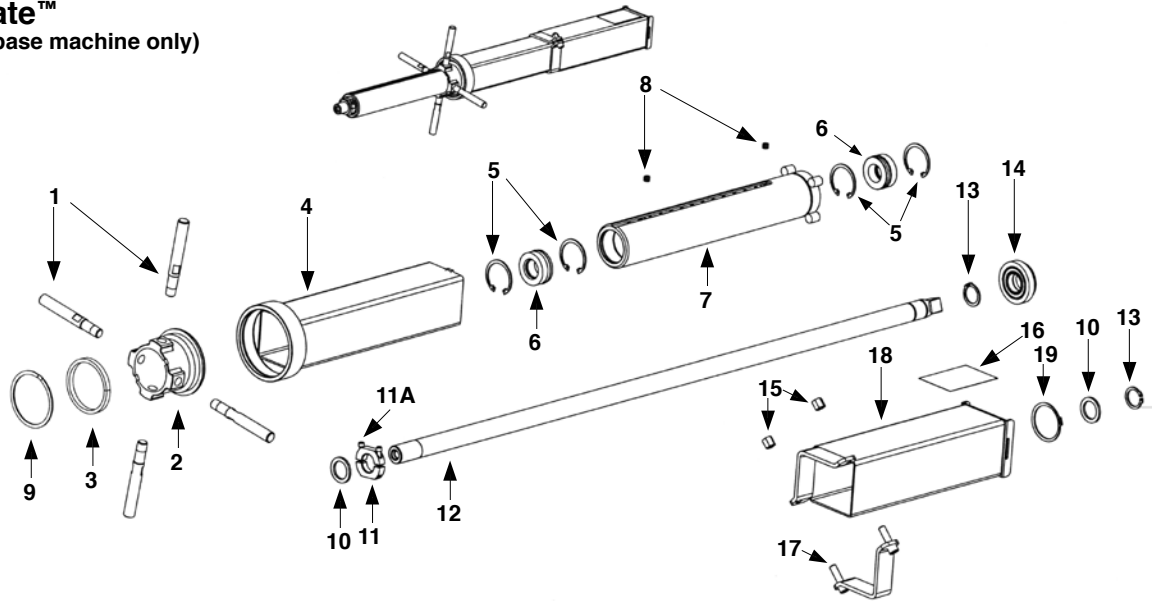
Transmate

1-800-426-9341



TapMate™ Parts List

TapMate™ 350-00 (base machine only)



REF NO.	DESCRIPTION	ITEM NO.	LIST PRICE
1	Handle for Lead Nut (4 required)	350-29	\$83.93
2	Lead Nut	350-24	539.42
3	Lead Nut Nylatron Washer	350-24-531	37.38
4	Thrust Tube	350-32	779.12
5	Lead Tube Snap Ring (4 required)	350-23-54	10.81
6	Lead Tube Bushing Complete (2 required)	350-22-2A	226.90
6A	Lead Tube Bushing Only (2 required)	350-22-2	184.43
6B	Shaft Poly Pak Seal (1 per bushing, 2 per machine)	350-57-2	23.05
6C	Lead Tube Bushing O-Ring (1 per bushing, 2 per machine)	350-57-1-62	11.99
7	Lead Tube	350-23	1,282.52
8	Lead Tube Socket Plug (2 required)	350-23-512	6.03
9	Lead Nut Snap Ring	350-24-54	23.97
10	Jam Nut Thrust Washer (2 required)	350-20-531	18.54
11	Jam Nut (for cutters)	350-52	50.41
11A	Jam Nut Set Screw	350-52-1	1.07
12	Shaft Main	350-20	838.70
13	Shaft End Snap Ring (2 required)	350-20-54	10.81
14	Shaft End Bushing Complete	350-22-1	234.95
14A	Shaft End Bushing	350-22	130.38
14B	Shaft End Bearing	350-20-56	107.89
15	Brake Nut (2 required)	350-31-52	7.19
16	Serial Number Plate	350-58	13.15
17	Brake Half, Threaded	350-31	100.67
18	Brake Tube Complete	350-30	779.12
19	Shaft End Bushing Snap Ring	350-22-54	10.81
20	Shaft Nose Complete	350-21-A	327.72
20A	Spade Bit Lock Screw	350-03-531	6.03
20B	Coupon Retainer Ball (5/16)	350-21-561	6.03
20C	Coupon Retainer Spring	350-21-55	6.42
20D	Coupon Retainer Set Screw	350-21-512	6.03