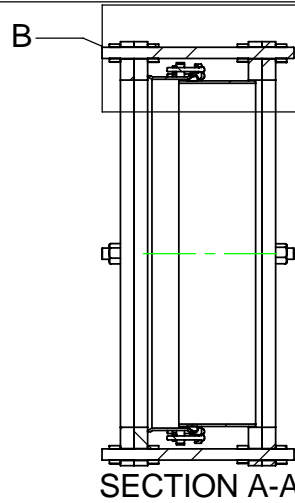
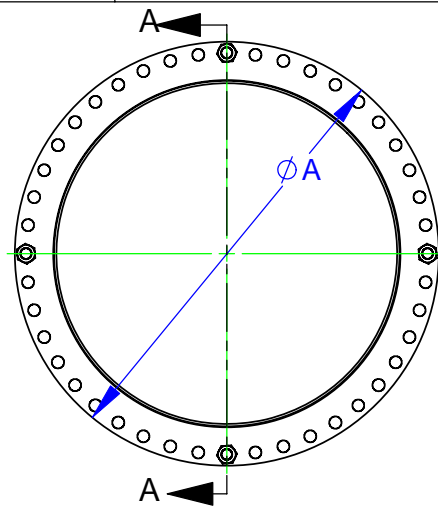
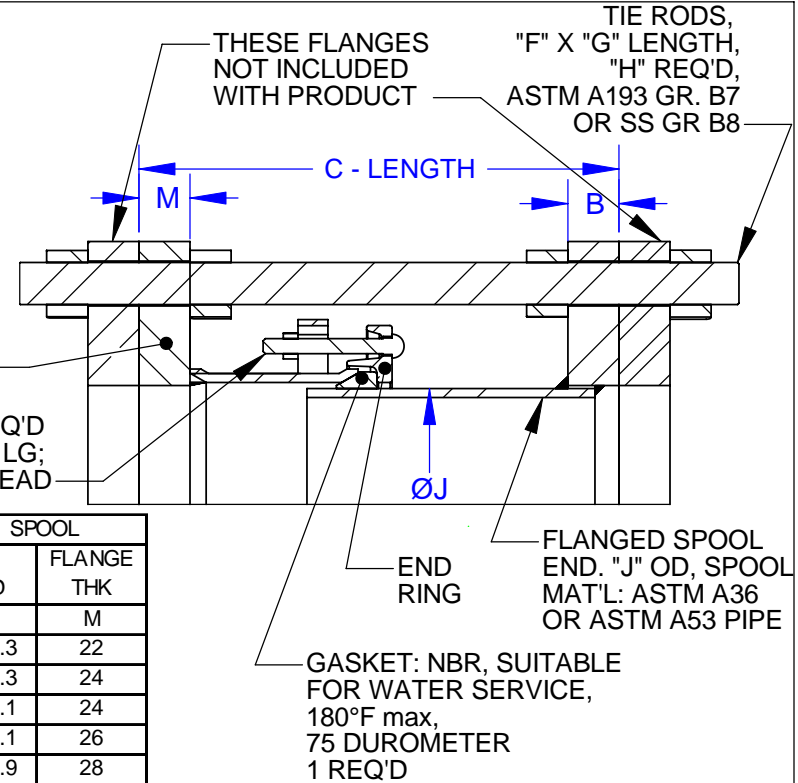


B3242-A



ISO 7005 PN-10 RING FLANGE, 2 REQ'D

BOLTS, "D" REQ'D
"E" SIZE X 5.0 LG;
TRACK HEAD



THESE FLANGES NOT INCLUDED WITH PRODUCT

TIE RODS, "F" X "G" LENGTH, "H" REQ'D, ASTM A193 GR. B7 OR SS GR B8

FLANGED SPOOL END. "J" OD, SPOOL MAT'L: ASTM A36 OR ASTM A53 PIPE

GASKET: NBR, SUITABLE FOR WATER SERVICE, 180°F max, 75 DUROMETER 1 REQ'D

DETAIL B

NOTES:

1. COATING: FUSION BONDED EPOXY IS STANDARD. OTHER COATINGS AVAILABLE.
2. FASTENERS: HSLA. STAINLESS STEEL IS OPTIONAL.
3. PRESSURE RATED UP TO PN-16 FLANGES PROVIDED. (235 PSI)
4. WHEN INSTALLING, POSITION THE FLANGED COUPLING END IN THE REQUIRED LOCATION & THEN FOLLOW BOLTING INSTRUCTIONS.
5. NOT INTENDED TO PROVIDE LATERAL MOVEMENT IN PIPELINE.

NOM SIZE	DIMENSIONS (MM)					BOLTS		TIE RODS				SPOOL	
	FLANGE OD	FLANGE THK	C - LENGTH			QTY	SIZE (UNC)	SIZE	LENGTH	B7 QTY	SS QTY	OD	FLANGE THK
	A	B	NOM.	MIN.	MAX.	D	E	F	G	H	H	J	M
100	220	22	324	286	362	4	5/8 - 11	M16	465	2	2	114.3	22
150	285	24	330	292	368	5	5/8 - 11	M20	485	2	2	168.3	24
200	340	24	330	292	368	6	5/8 - 11	M20	485	2	2	219.1	24
250	395	26	337	298	375	6	5/8 - 11	M20	500	2	2	273.1	26
300	445	28	337	298	375	8	5/8 - 11	M20	505	2	2	323.9	28
350	505	30	343	305	381	8	5/8 - 11	M20	510	2	4	355.6	30
400	565	32	356	318	394	10	5/8 - 11	M24	535	2	4	406.4	32
450	615	35	362	324	400	10	5/8 - 11	M24	550	2	4	457.2	35
500	670	38	368	330	406	12	5/8 - 11	M24	560	4	4	508.0	38
600	780	42	375	337	413	14	5/8 - 11	M27	580	4	4	609.6	42
700	895	80	451	413	489	16	5/8 - 11	M27	735	4	6	711.2	80
800	1015	90	489	451	527	16	5/8 - 11	M30	795	4	6	812.8	90
900	1115	95	495	457	533	18	5/8 - 11	M30	815	6	8	914.4	95
1000	1230	95	502	464	540	20	5/8 - 11	M33	830	4	8	1016.0	95
1200	1455	115	559	521	597	22	5/8 - 11	M36	930	6	10	1219.2	115
1400	1675	120	572	533	610	26	5/8 - 11	M39	960	6	10	1422.4	120
1600	1915	130	597	559	635	28	5/8 - 11	M45	1020	6	8	1524.0	130
1800	2115	140	616	578	654	32	5/8 - 11	M45	1055	8	12	1828.8	140

<p>PROPRIETARY NOTICE</p> <p>THIS DRAWING CONTAINS CONFIDENTIAL PROPRIETARY INFORMATION AND IS THE PROPERTY OF ROMAC IND., INC. IT IS TO BE USED ONLY FOR THE PURPOSE FOR WHICH IS WAS SUBMITTED AND SHALL NOT HAVE IT'S INFORMATION DISCLOSED OR REPRODUCED IN WHOLE OR IN PART FOR ANY PURPOSE WITHOUT PRIOR WRITTEN PERMISSION OF ROMAC IND., INC.</p>	<p>UNLESS OTHERWISE SPECIFIED</p> <p>DIMENSIONS ARE IN INCHES</p> <p>TOLERANCES ARE ON: 1 PL DECIMALS ± .060 2 PL DECIMALS ± .030 3 PL DECIMALS ± .010 ANGLES ± 1° FRACTIONS ± 1/64</p>	SIGNATURES		<p>ROMAC INDUSTRIES INC., BOTHELL, WA</p>	TITLE			
		DRAWN			DJ400 - 100MM - 1800MM, ISO 7005 PN 10 FLANGE			
		CHECKED			APPROVAL ORGANIZATIONS		DWG. NO.	SIZE
		PROP.CUST.APP. ORG.		B3242-A	A	0	NTS	1 OF 1