

B2127-A

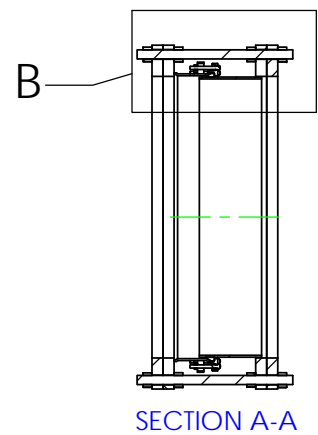
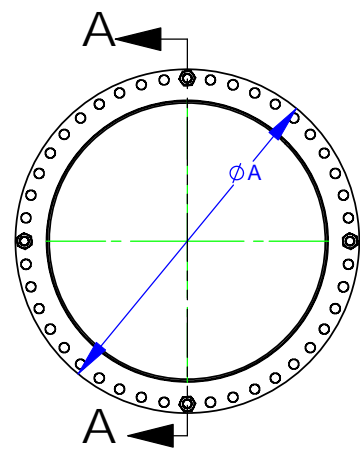
NOM SIZE	DIMENSIONS					BOLTS		TIE RODS (STEEL OR SS)				SPOOL			APPROX WEIGHT
	FLANG E OD	FLANG E THK	C - LENGTH			QTY	SIZE (UNC)	SIZE (UNC)	LENGT H	QTY	QTY (SS)	OD	PIPE THK	FLANGE THK	
	A	B	NOM	MIN.	MAX.	D	E	F	G	H	H	J	K	M	
14	21.00	1.88	18.25	16.75	19.75	8	5/8 - 11	1 - 8	26.50	2	4	14.00	0.25	1.88	323
16	23.50	2.00	18.50	17.00	20.00	10	5/8 - 11	1 - 8	27.00	4	4	16.00	0.25	2.00	391
18	25.00	2.13	18.75	17.25	20.25	10	5/8 - 11	1 1/8 - 7	27.75	4	4	18.00	0.25	2.13	431
20	27.50	2.38	19.25	17.75	20.75	12	5/8 - 11	1 1/8 - 7	28.75	4	6	20.00	0.25	2.38	552
24	32.00	2.63	22.00	20.50	23.50	14	5/8 - 11	1 1/4 - 7	32.25	4	6	24.00	0.25	2.63	762
30	38.75	2.88	22.75	21.25	24.25	16	5/8 - 11	1 1/4 - 7	33.50	6	8	30.00	0.38	2.88	1169
36	46.00	3.13	23.75	22.25	25.25	18	5/8 - 11	1 1/2 - 6	35.50	6	8	36.00	0.38	3.13	1635
42	53.00	3.38	24.75	23.25	26.25	20	5/8 - 11	1 1/2 - 6	37.50	8	12	42.00	0.38	3.38	2246
48	59.50	3.50	25.00	23.50	26.50	22	5/8 - 11	1 1/2 - 6	37.50	10	16	48.00	0.50	3.50	2919
54	66.25	3.75	26.00	24.50	27.50	24	5/8 - 11	1 3/4 - 5	40.00	10	14	54.00	0.50	3.75	3605
60	73.00	3.88	26.25	24.75	27.75	28	5/8 - 11	1 3/4 - 5	40.00	12	18	60.00	0.63	3.88	4554
66	80.00	4.25	27.00	25.50	28.50	30	5/8 - 11	1 3/4 - 5	41.50	14	20	66.00	0.63	4.25	5645
72	86.50	4.38	27.25	25.75	28.75	32	5/8 - 11	1 3/4 - 5	42.00	16	24	72.00	0.63	4.38	6489

REVISIONS			
REV.	DESCRIPTION	DATE	APPROVED
0	INITIAL RELEASE	12/20/02	NST
1	48" TIE ROD QTY "H" WAS 16	8/25/03	NST
2	ADDED SS TIE ROD QTY	2/2/05	NST
3	ADD WELD SYMBOL & NOTE 6	5/8/06	NST
4	ADDED 68" SIZE - REVISED CENTER RING WIDTH TO ACCOMMODATE FLANGE BOLTS, TIE RODS, AND SETTING LENGTH (F/F) INCREASED BY (CR WIDTH - 7.0)	10/16/07	NST
5	UPDATED APPROX WEIGHT 14" - 72"	7/6/09	PNN

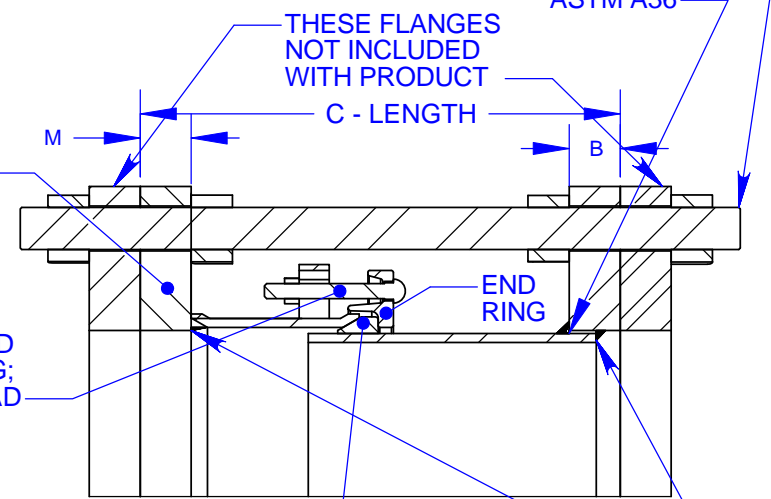
TIE RODS, "F" UNC X "G" LENGTH, "H" REQ'D, ASTM A193 GR. B7 (ALLOY STEEL), GR. B8 (304 SS) OR GR B8M (316 SS)

FLANGED SPOOL END. "J" OD X "K" THK, SPOOL MAT'L: ASTM A36

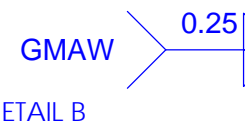
THESE FLANGES NOT INCLUDED WITH PRODUCT



BOLTS, "D" REQ'D "E" SIZE X 5.0 LG; TRACK HEAD



GASKET: SUITABLE FOR WATER SERVICE, 180°F max, 75 DUROMETER 1 REQ'D



- NOTES:
- COATING: CUSTOMER SPECIFIED. ROMAC NSF 61 SHOPCOAT PAINT OR NSF 61 CERTIFIED FUSION BONDED EPOXY.
 - FASTENERS: CUSTOMER SPECIFIED. HSLA PER ASTM A588 OR STAINLESS STEEL TYPE 304 OR 316 PER ASTM A193.
 - PRESSURE RATED UP TO FLANGES PROVIDED. 14"-72" AWWA CLS E 275 PSIG WORKING, 413 PSIG TEST.
 - WHEN INSTALLING, POSITION THE FLANGED COUPLING END IN THE REQUIRED LOCATON & THEN FOLLOW BOLTING INSTRUCTIONS.
 - NOT INTENDED TO PROVIDE LATERAL MOVEMENT IN PIPELINE.
 - ALL WELDING PERFORMED IN ACCORDANCE WITH AWS D1.1

PROPRIETARY NOTICE	UNLESS OTHERWISE SPECIFIED	SIGNATURES	ROMAC INDUSTRIES INC., BOTHELL, WA			
THIS DRAWING CONTAINS CONFIDENTIAL PROPRIETARY INFORMATION AND IS THE PROPERTY OF ROMAC IND., INC. IT IS TO BE USED ONLY FOR THE PURPOSE FOR WHICH IT WAS SUBMITTED AND SHALL NOT HAVE ITS INFORMATION DISCLOSED OR REPRODUCED IN WHOLE OR IN PART FOR ANY PURPOSE WITHOUT PRIOR WRITTEN PERMISSION OF ROMAC IND., INC.	DIMENSIONS ARE IN INCHES	DRAWN	TITLE DISMANTLING JOINT DJ400 - W/ TIE RODS 14" - 72" CLS E FLANGE			
	TOLERANCES ARE ON: 1 PL DECIMALS ± .060 2 PL DECIMALS ± .030 3 PL DECIMALS ± .010 ANGLES ± 1° FRACTIONS ± 1/64	CHECKED				
		APPROVAL ORGANIZATIONS ENGINEERING	DWG. NO. B2127-A	SIZE A	REV. NO. 5	SCALE NTS