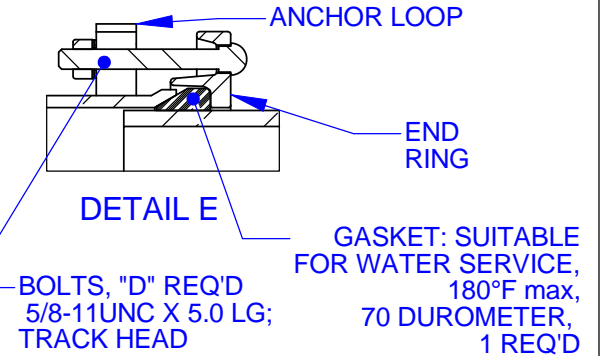


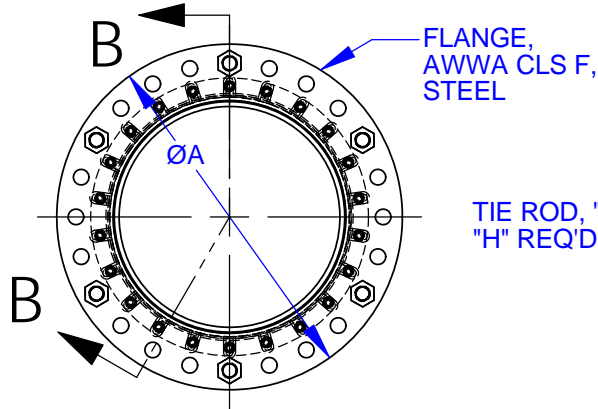
B2090-A

NOM SIZE	DIMENSIONS					END RING BOLTS	TIE RODS				SPOOL		APPROX WEIGHT LBS
	FLANGE OD	FLANGE THK	C - LENGTH			QTY	SIZE (UNC)	LENGTH	STEEL QTY	SS QTY	OD	PIPE THK	
	A	B	NOM.	MIN.	MAX.	D	F	G	H	J	K		
3*	8.25	1.13	13.00	11.50	14.50	4	3/4 - 10	19.25	2	2	3.50	0.22	45
4	10.00	1.13	13.00	11.50	14.50	4	3/4 - 10	19.25	2	2	4.50	0.24	61
6	12.50	1.31	13.25	11.75	14.75	6	3/4 - 10	20.00	2	2	6.63	0.28	96
8	15.00	1.31	13.50	12.00	15.00	6	7/8 - 9	20.50	2	2	8.63	0.32	131
10	17.50	1.50	14.00	12.50	15.50	8	1 - 8	21.50	2	2	10.75	0.37	183
12	20.50	1.63	14.50	13.00	16.00	8	1 1/8 - 7	22.75	2	4	12.75	0.38	267
14	23.00	1.94	15.50	14.00	17.00	8	1 1/8 - 7	24.25	2	4	14.00	0.25	351
16	25.50	2.44	16.00	14.50	17.50	10	1 1/4 - 7	25.75	2	4	16.00	0.25	449
18	28.00	2.25	16.25	14.75	17.75	10	1 1/4 - 7	25.75	2	4	18.00	0.25	533
20	30.50	2.33	16.50	15.00	18.00	12	1 1/4 - 7	26.25	4	4	20.00	0.25	632
24	36.00	2.69	17.25	15.75	18.75	14	1 1/2 - 6	28.25	4	4	24.00	0.25	954
30	43.00	3.15	18.75	17.25	20.25	16	1 3/4 - 5	31.25	4	6	30.00	0.38	1537
36	50.00	3.46	19.75	18.25	21.25	18	2 - 4 1/2	33.25	4	6	36.00	0.38	2078
42	57.00	3.81	21.00	19.50	22.50	22	2 - 4 1/2	35.25	6	8	42.00	0.50	2939
48	65.00	4.50	22.50	21.00	24.00	24	2 - 4 1/2	38.00	6	10	48.00	0.50	4356

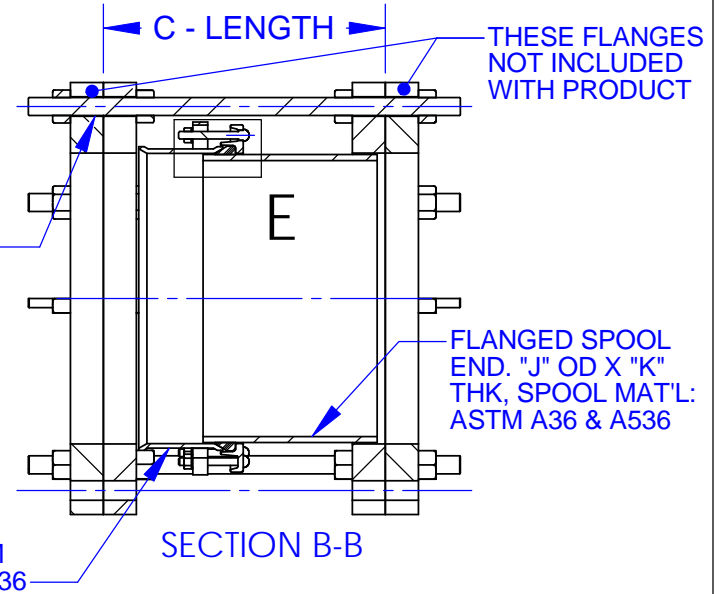
REVISIONS			
REV.	DESCRIPTION	DATE	APPROVED
0	INITIAL RELEASE	10/17/02	NST III
1	ADDED 3" SIZE	11/15/02	NST III
2	UPDATED APPROX WEIGHT 3"-48"	7/6/09	PNN



* 3" SIZE USES AN ANSI CLS 300 FLANGE WITH A FLAT FACE



TIE ROD, "F" UNC X "G" LG. "H" REQ'D, ASTM A193 GR. B7



NOTES:

1. COATING: CUSTOMER SPECIFIED. ROMAC NSF 61 SHOPCOAT PAINT OR NSF 61 CERTIFIED FUSION BONDED EPOXY.
2. FASTENERS: CUSTOMER SPECIFIED. HSLA PER ASTM A588 OR STAINLESS STEEL TYPE 304 OR 316 PER ASTM A193.
3. PRESSURE RATED UP TO FLANGES PROVIDED. 4"-48" AWWA CLS F 300 PSIG WORKING, 450 PSIG TEST.
4. WHEN INSTALLING, POSITION THE FLANGED COUPLING END IN THE REQUIRED LOCATION & THEN FOLLOW BOLTING INSTRUCTIONS.
5. NOT INTENDED TO PROVIDE LATERAL MOVEMENT IN PIPELINE.

PROPRIETARY NOTICE	UNLESS OTHERWISE SPECIFIED	SIGNATURES	ROMAC INDUSTRIES INC., BOTHELL, WA			
THIS DRAWING CONTAINS CONFIDENTIAL PROPRIETARY INFORMATION AND IS THE PROPERTY OF ROMAC IND., INC. IT IS TO BE USED ONLY FOR THE PURPOSE FOR WHICH IT WAS SUBMITTED AND SHALL NOT HAVE ITS INFORMATION DISCLOSED OR REPRODUCED IN WHOLE OR IN PART FOR ANY PURPOSE WITHOUT PRIOR WRITTEN PERMISSION OF ROMAC IND., INC.	DIMENSIONS ARE IN INCHES	DRAWN	TITLE DISMANTLING JOINT DJ400 3"-48" AWWA CLS F			
	TOLERANCES ARE ON: 1 PL DECIMALS ± .060 2 PL DECIMALS ± .030 3 PL DECIMALS ± .010 ANGLES ± 1° FRACTIONS ± 1/64	CHECKED				
		APPROVAL ORGANIZATIONS ENGINEERING	DWG. NO. B2090-A	SIZE A	REV. NO. 2	SCALE NTS