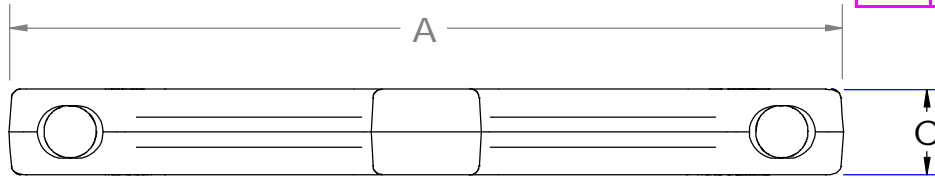
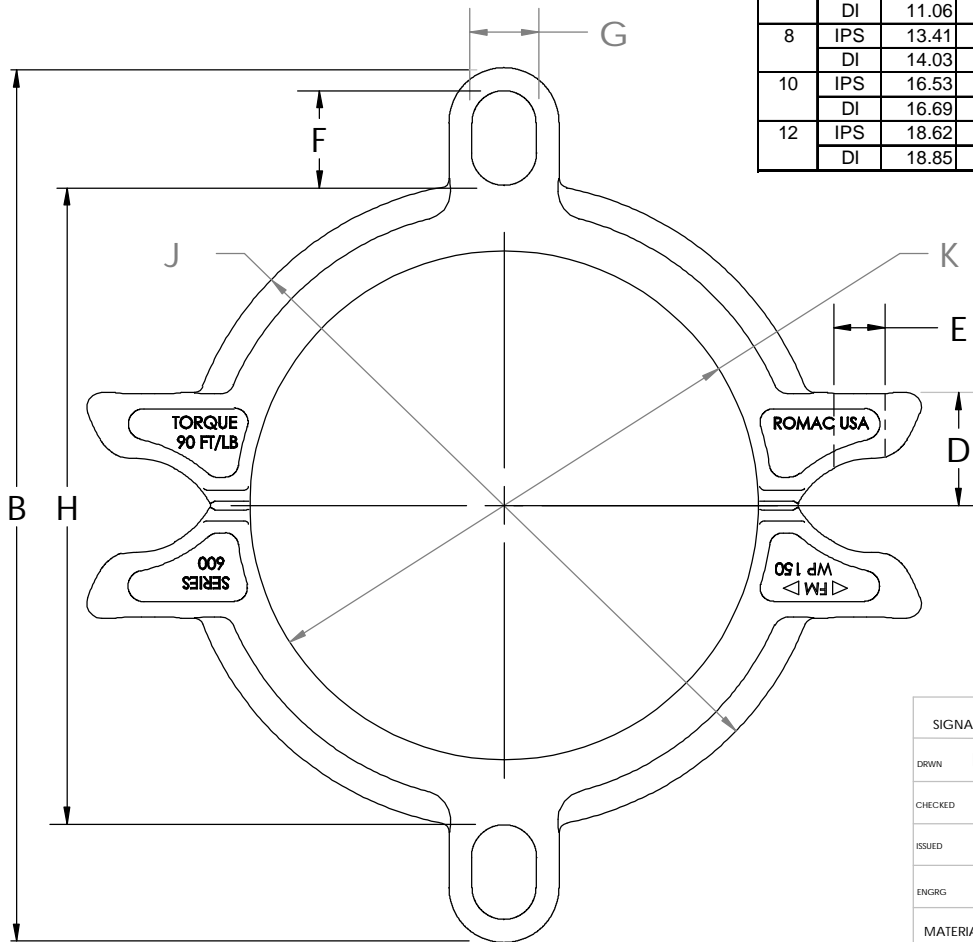


REVISIONS

REV	DESCRIPTION	DATE	APPROVED
-----	-------------	------	----------



Nom. Size	Type	A	B	C	D	E	F	G	H	J	K ± 0.007	Clamping Bolts Qty:Size	Restraining Rods Qty:Size
4	IPS	8.37	9.62	1.14	1.38	0.70	1.26	0.85	6.50	6.20	4.51	2: 5/8" x 4"	2: 3/4"
	DI	8.72	9.62	1.14	1.38	0.70	1.26	0.85	6.50	6.50	4.81	2: 5/8" x 4"	2: 3/4"
6	IPS	10.76	11.62	1.14	1.38	0.70	1.26	0.85	8.50	8.32	6.64	2: 5/8" x 4"	2: 3/4"
	DI	11.06	11.62	1.14	1.38	0.70	1.26	0.85	8.50	8.60	6.91	2: 5/8" x 4"	2: 3/4"
8	IPS	13.41	14.06	1.25	1.60	0.88	1.36	0.85	10.74	10.52	8.64	2: 3/4" x 5"	2: 3/4"
	DI	14.03	14.06	1.25	1.60	0.88	1.36	0.85	10.74	11.10	9.06	2: 3/4" x 5"	2: 3/4"
10	IPS	16.53	16.75	1.50	2.07	1.00	1.51	0.85	13.04	12.80	10.76	2: 7/8" x 6"	4: 3/4"
	DI	16.69	16.75	1.50	2.07	1.00	1.51	0.85	13.04	12.92	11.11	2: 7/8" x 6"	4: 3/4"
12	IPS	18.62	19.25	1.50	2.07	1.00	1.66	0.85	15.26	14.80	12.76	2: 7/8" x 6"	4: 3/4"
	DI	18.85	19.25	1.50	2.07	1.00	1.66	0.85	15.26	15.02	13.21	2: 7/8" x 6"	4: 3/4"



SIGNATURES		DATE			ROMAC IND. INC., SEATTLE, WA	
DRWN	H MORRISS	3/28/02			TITLE SERIES 600 MACHINED CASTING	
CHECKED						
ISSUED						
ENGRG						
MATERIAL: DUCTILE IRON PER ASTM A536 GRADE 65-45-12				SIZE A	DWG. NO. B1979-A	REV. NO.
				SCALE NTS	SHEET 1 OF 1	