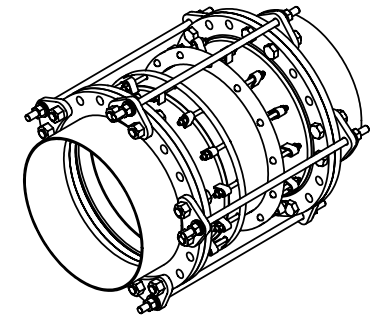
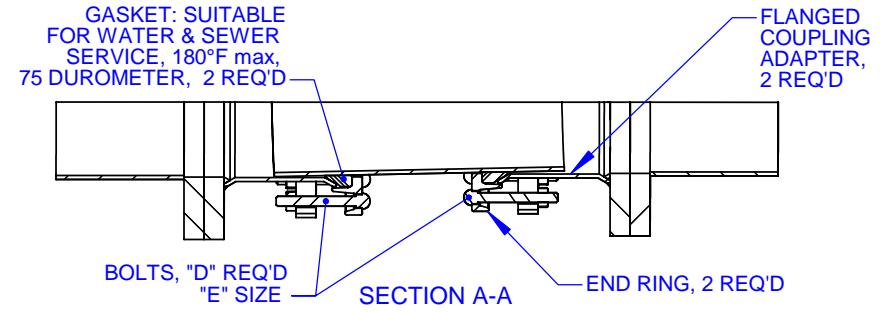
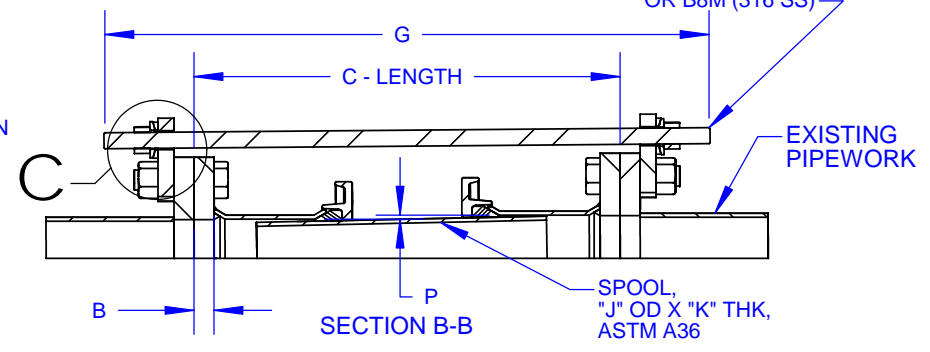
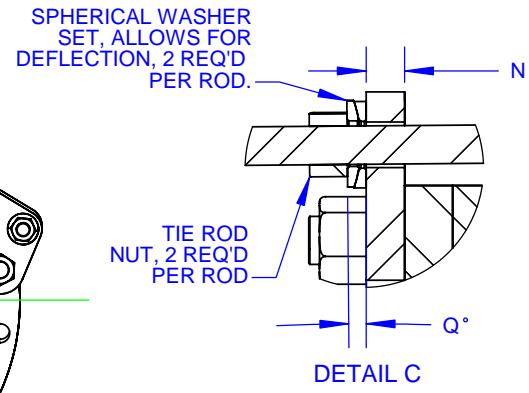
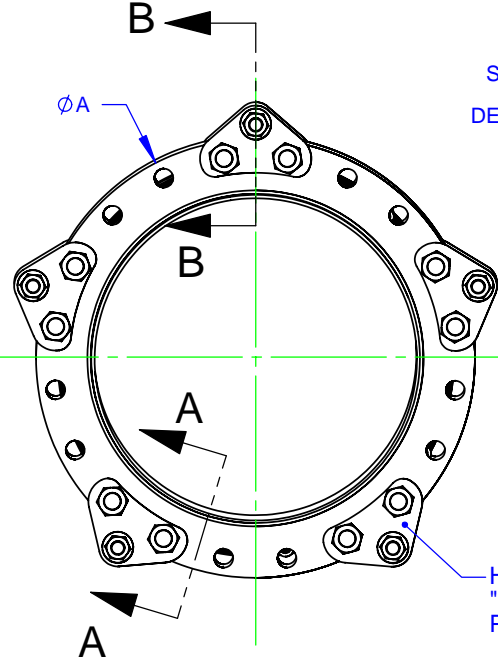


NOM SIZE	DIMENSIONS					BOLTS		TIE RODS				SPOOL		HARNES LUG THK	OFFSET		MAX DEFL. (DEG)	APPROX. WEIGHT
	FLANGE OD	FCA FLANGE THK	C - LENGTH			QTY	SIZE	SIZE	LENGTH	QTY	OD	THK	AT MIN. LENGTH		AT MAX. LENGTH			
			A	B	NOM.									MIN.		MAX.	D	E
14	21.00	0.94	23.75	22.25	25.25	16	5/8 - 11	1	35.00	2	14.00	0.25	1.00	0.25	0.37	2.25	274	
16	23.50	1.00	24.75	23.25	26.25	20	5/8 - 11	1	36.25	2	16.00	0.25	1.00	0.25	0.36	2.00	322	
18	25.00	1.06	24.75	23.25	26.25	20	5/8 - 11	1	36.50	3	18.00	0.25	1.00	0.25	0.35	2.00	367	
20	27.50	1.13	24.88	23.38	26.38	24	5/8 - 11	1	37.13	4	20.00	0.25	1.00	0.25	0.35	2.00	438	
24	32.00	1.25	25.13	23.63	26.63	28	5/8 - 11	1	37.88	5	24.00	0.25	1.00	0.25	0.35	2.00	576	
30	38.75	1.38	26.38	24.88	27.88	32	5/8 - 11	1 1/4	40.63	5	30.00	0.38	1.25	0.25	0.34	1.75	908	
36	46.00	1.63	26.88	25.38	28.38	36	5/8 - 11	1 1/4	41.63	7	36.00	0.38	1.25	0.25	0.34	1.75	1272	
42	53.00	1.75	28.63	27.13	30.13	40	5/8 - 11	1 1/4	43.88	9	42.00	0.38	1.25	0.25	0.33	1.50	1673	
48	59.50	1.88	30.75	29.25	32.25	44	5/8 - 11	1 1/2	47.75	8	48.00	0.38	1.75	0.25	0.32	1.25	2098	
54	66.25	2.13	31.25	29.75	32.75	48	5/8 - 11	1 1/2	49.13	10	54.00	0.38	1.75	0.25	0.32	1.25	2670	
60	73.00	2.25	31.50	30.00	33.00	56	5/8 - 11	1 1/2	49.63	13	60.00	0.38	1.75	0.25	0.32	1.25	3245	
66	80.00	2.50	34.88	33.38	36.38	60	5/8 - 11	1 3/4	54.75	11	66.00	0.38	2.00	0.25	0.30	1.00	4052	
72	86.50	2.63	35.13	33.63	36.63	64	5/8 - 11	1 3/4	55.25	13	72.00	0.38	2.00	0.25	0.30	1.00	4659	



TIE ROD, "F" UNC X "G" LENGTH, "H" REQ'D, ASTM A193 GR. B7 (ALLOY), B8 (304 SS), OR B8M (316 SS)



- NOTES:
1. NSF 61 CERTIFIED COATING: FUSION BONDED EPOXY IS STANDARD. OTHER COATINGS AVAILABLE UPON REQUEST.
 2. FASTENERS: HSLA PER ASTM A588 IS STANDARD. STAINLESS STEEL TYPE 304 OR 316 PER ASTM A193 AVAILABLE UPON REQUEST.
 3. PRESSURE RATED UP TO FLANGES PROVIDED; 14" - 72" AWWA CLS D 150 PSIG WORKING, 250 PSIG TEST. FOR HIGHER PRESSURES, AWWA CLS E OR CLS F FLANGES AVAILABLE.
 4. ACCOMMODATES DEFLECTION AND/OR OFFSET IN A SYSTEM PROVIDING A SOLID CONNECTION AFTER INSTALLATION, WHEN INSTALLING, POSITION THE FLANGED COUPLING END IN THE REQUIRED LOCATION & THEN FOLLOW BOLTING INSTRUCTIONS.
 5. NOT INTENDED TO PROVIDE LATERAL MOVEMENT IN PIPELINE.

THIS DRAWING CONTAINS CONFIDENTIAL PROPRIETARY INFORMATION AND IS THE PROPERTY OF ROMAC IND., INC. IT'S TO BE USED ONLY FOR THE PURPOSE FOR WHICH IT'S SUBMITTED AND SHALL NOT HAVE ITS INFORMATION DISCLOSED OR REPRODUCED IN WHOLE OR IN PART FOR ANY PURPOSE WITHOUT PRIOR WRITTEN PERMISSION OF ROMAC IND., INC.

UNLESS OTHERWISE SPECIFIED	SIGNATURES	DATE		ROMAC IND. INC., SEATTLE, WA	
DIMENSIONS ARE IN INCHES TOLERANCES ARE ON: 2 PL DECIMALS +/- .05 3 PL DECIMALS +/- ANGLES +/- FRACTIONS +/-	DRWN			EQUIPMENT CONNECTION FITTING, ECF400 14" - 72" AWWA CLS D	
	CHECKED			SIZE: A	DWG. NO.: B2358-A
	MATERIAL: MILD STEEL (A-36)		SCALE: NTS	SHEET 1 OF 1	REV. NO.: -