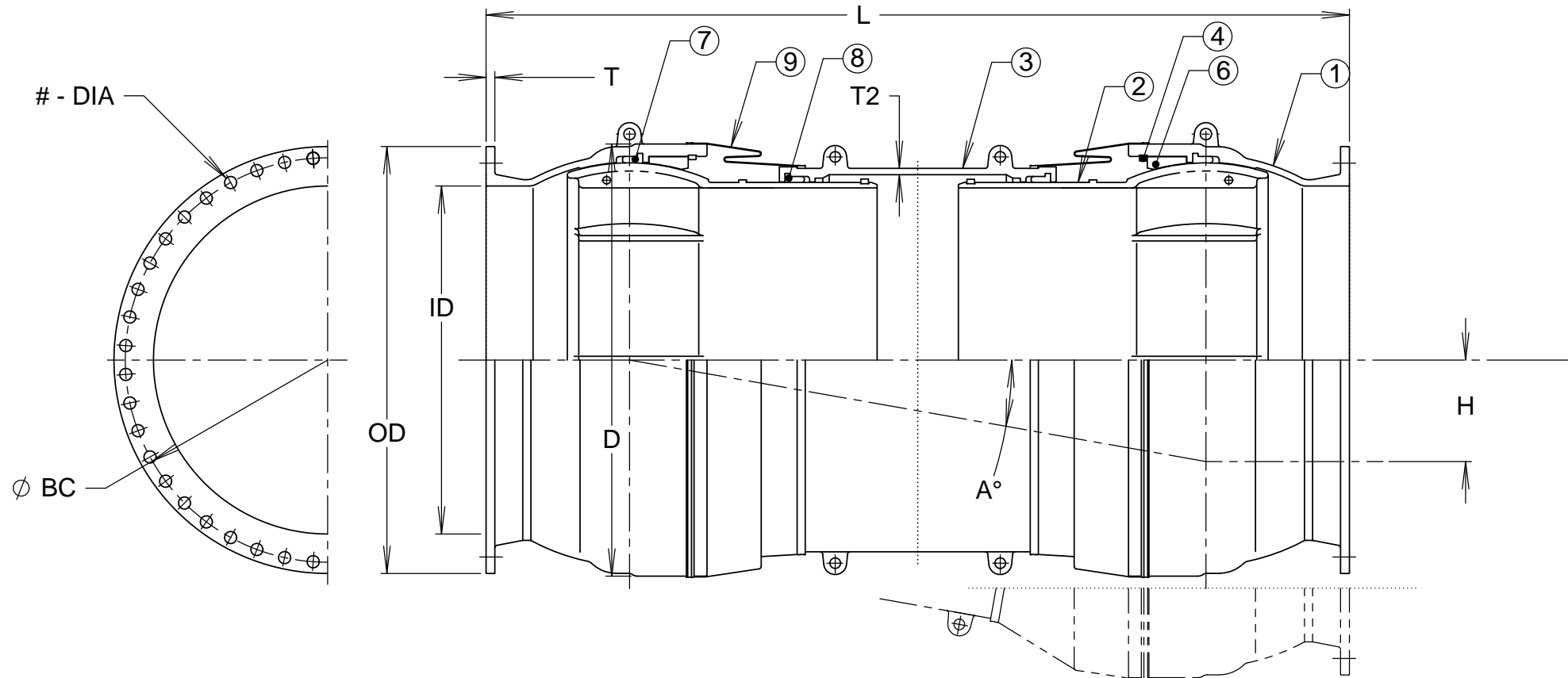


B2295-B

REVISIONS			
REV.	DESCRIPTION	DATE	APPROVED
0	INITIAL RELEASE	10/23/2003	DHE
1	ADDED 19.7" OFFSET SIZE	10/24/2007	DHE
2	19.7 OFFSET SIZE WAS +7.9/-5.9	10/29/2007	DHE
3	NAME WAS FLEXIJOINT, UPDATED FORMAT	1/23/2012	NST



DIMENSIONS													
SIZE	D	H (OFFSET)	L	ANGLE A	EXPANSION/CONTRACTION	OD	BC	ID	T	T2	FLANGE BOLT HOLES		WGT., LBS.
											#	DIA	
48"	60.6	11.8	108.3	±10.0°	+7.9/ -5.9	59.5	56.0	48.0	1.37	0.9	44	1.63	11500
		15.8	129.9		+13.8/ -9.8								12100
		19.7	152.4		+13.8/ -9.8								13300

PART NO.	QTY.	NAME	MATERIAL
1	2	CASING	DUCTILE IRON
2	2	BALL SLEEVE	DUCTILE IRON
3	1	SLEEVE	DUCTILE IRON
4	2	LOCKRING	DUCTILE IRON
5	2	LOCKRING	DUCTILE IRON
6	2	CASING PIECE	DUCTILE IRON
7	2	RUBBER RING	SBR
8	2	RUBBER RING	SBR
9	2	CASING COVER	SBR

NOTE:

- FUSION BONDED EPOXY APPLIED TO ALL DUCTILE IRON COMPONENTS.
- FLANGE COMPATIBLE WITH CLASS 150 DRILLING.

<p>PROPRIETARY NOTICE</p> <p>THIS DRAWING CONTAINS CONFIDENTIAL PROPRIETARY INFORMATION AND IS THE PROPERTY OF ROMAC IND., INC. IT IS TO BE USED ONLY FOR THE PURPOSE FOR WHICH IT WAS SUBMITTED AND SHALL NOT HAVE ITS INFORMATION DISCLOSED OR REPRODUCED IN WHOLE OR IN PART FOR ANY PURPOSE WITHOUT PRIOR WRITTEN PERMISSION OF ROMAC IND., INC.</p>	<p>UNLESS OTHERWISE SPECIFIED</p> <p>DIMENSIONS ARE IN INCHES</p> <p>TOLERANCES ARE ON: 1 PL DECIMALS ± .060 2 PL DECIMALS ± .030 3 PL DECIMALS ± .010 ANGLES ± 1° FRACTIONS ± 1/64</p>	<p>SIGNATURES</p> <p>DRAWN</p> <p>CHECKED</p> <p>APPROVAL ORGANIZATIONS</p> <p>PROP.CUST.APP. ORG.</p>		<p>ROMAC INDUSTRIES INC., BOTHELL, WA</p> <p>TITLE</p> <p>FJ-RESTRAINT 48", DOUBLE BALL, FLANGED</p>	
<p>DWG. NO. B2295-B</p>		<p>SIZE B</p>	<p>REV. NO. 3</p>	<p>SCALE NTS</p>	<p>SHEET 1 OF 1</p>