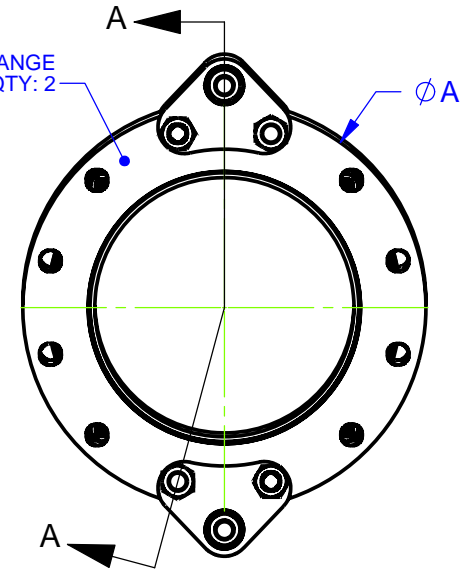
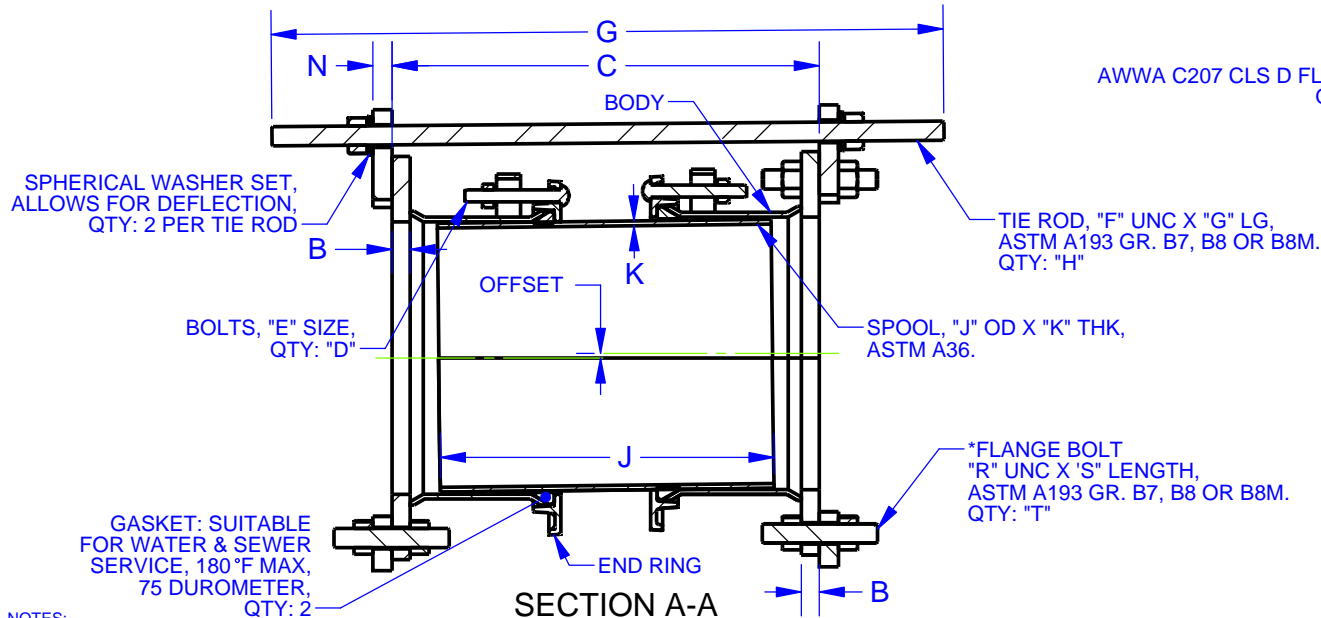


CAD-005065

NOM PIPE SIZE	DIMENSIONS					BOLTS		TIE RODS			SPOOL		HARNES LUG THK	*FLANGE BOLT			OFFSET		MAX DEFLECTION DEGREES	APPROX WEIGHT LBS
	FLANGE OD	FLANGE THK	C - LENGTH			QTY	SIZE	SIZE	LENGTH	QTY	OD	THK		SIZE	LENGTH	QTY	AT MIN LENGTH	AT MAX LENGTH		
	A	B	NOM	MIN	MAX	D	E	F	G	H	J	K	N	R	S	T				
14	21.00	0.94	23.75	22.25	25.25	16	5/8 - 11	1	35.00	2	14.00	0.25	1.00	1	6.50	8	0.25	0.37	2.25	286
16	23.50	1.00	24.75	23.25	26.25	20	5/8 - 11	1	36.25	2	16.00	0.25	1.00	1	6.75	8	0.25	0.36	2.00	334
18	25.00	1.06	24.75	23.25	26.25	20	5/8 - 11	1	36.50	3	18.00	0.25	1.00	1-1/8	7.00	12	0.25	0.35	2.00	391
20	27.50	1.13	24.88	23.38	26.38	24	5/8 - 11	1	37.25	4	20.00	0.25	1.00	1-1/8	7.50	16	0.25	0.35	2.00	472
24	32.00	1.25	25.13	23.63	26.63	28	5/8 - 11	1	38.00	5	24.00	0.25	1.00	1-1/4	8.00	20	0.25	0.35	2.00	631
30	38.75	1.38	26.38	24.88	27.88	32	5/8 - 11	1-1/4	40.75	5	30.00	0.38	1.25	1-1/4	8.75	20	0.25	0.34	1.75	969
36	46.00	1.63	26.88	25.38	28.38	36	5/8 - 11	1-1/4	41.75	7	36.00	0.38	1.25	1-1/2	10.00	28	0.25	0.34	1.75	1412
42	53.00	1.75	28.63	27.13	30.13	40	5/8 - 11	1-1/4	44.00	9	42.00	0.38	1.25	1-1/2	10.50	36	0.25	0.33	1.50	1862
48	59.50	1.88	30.75	29.25	32.25	44	5/8 - 11	1-1/2	47.75	8	48.00	0.38	1.75	1-1/2	11.50	32	0.25	0.32	1.25	2282
54	66.25	2.13	31.25	29.75	32.75	48	5/8 - 11	1-1/2	49.25	10	54.00	0.38	1.75	1-3/4	12.75	40	0.25	0.32	1.25	3018
60	73.00	2.25	31.50	30.00	33.00	56	5/8 - 11	1-1/2	49.75	13	60.00	0.38	1.75	1-3/4	12.00	52	0.25	0.32	1.25	3670
66	80.00	2.50	34.88	33.38	36.38	60	5/8 - 11	1-3/4	54.75	11	66.00	0.38	2.00	1-3/4	13.00	44	0.25	0.30	1.00	4441
72	86.50	2.63	35.13	33.63	36.63	64	5/8 - 11	1-3/4	55.25	13	72.00	0.38	2.00	1-3/4	13.25	52	0.25	0.30	1.00	5128

FOR CUSTOMER USE



- NOTES:
1. NSF 61 CERTIFIED COATING: FUSION BONDED EPOXY IS STANDARD. OTHER COATINGS AVAILABLE UPON REQUEST.
 2. FASTENERS: HSLA PER ASTM A588 IS STANDARD. STAINLESS STEEL TYPE 304 OR 316 PER ASTM A193 AVAILABLE UPON REQUEST.
 3. PRESSURE RATED UP TO FLANGES PROVIDED; 14" - 72" AWWA CLS D 150 PSIG WORKING, 187 PSIG TEST. FOR HIGHER PRESSURES, AWWA CLS E OR CLS F FLANGES AVAILABLE.
 4. ACCOMODATES DEFLECTION AND/OR OFFSET IN A SYSTEM PROVIDING A SOLID CONNECTION AFTER INSTALLATION.
 5. NOT INTENDED TO PROVIDE LATERAL MOVEMENT IN PIPELINE.
 6. *FLANGE BOLTS PROVIDED ARE ALL THREAD STUDS WITH TWO NUTS PER STUD AND ARE USED ONLY WHERE HARNES LUGS BOLT TO FLANGE. USER TO PROVIDE REMAINING FLANGE BOLTS.

REVISIONS			
REV.	DESCRIPTION	DATE	APPROVED
0	INITIAL RELEASE IN PDM, UPDATED TO CURRENT DESIGN	1/24/2013	PNN
1	FIXED DIM "C"	5/21/2015	NST

<p>PROPRIETARY NOTICE</p> <p>THIS DRAWING CONTAINS CONFIDENTIAL PROPRIETARY INFORMATION AND IS THE PROPERTY OF ROMAC IND., INC. IT IS TO BE USED ONLY FOR THE PURPOSE FOR WHICH IT WAS SUBMITTED AND SHALL NOT HAVE ITS INFORMATION DISCLOSED OR REPRODUCED IN WHOLE OR IN PART FOR ANY PURPOSE WITHOUT PRIOR WRITTEN PERMISSION OF ROMAC IND., INC.</p>		<p>UNLESS OTHERWISE SPECIFIED</p> <p>DIMENSIONS ARE IN INCHES</p> <p>TOLERANCES ARE ON:</p> <p>1 PL DECIMALS ± 0.060</p> <p>2 PL DECIMALS ± 0.030</p> <p>3 PL DECIMALS ± 0.010</p> <p>ANGLES ± 1°</p> <p>FRACTIONS ± 1/64</p>		<p>SIGNATURES</p> <p>DATE</p> <p>01/24/2013</p> <p>2/5/2013</p>		<p>ROMAC INDUSTRIES INC.</p> <p>TITLE</p> <p>ECF400 - 14 - 72 - AWWA CLS D - STANDARD LENGTHS</p>	
<p>DRAWN</p> <p>Peter Nielsen</p>		<p>APPROVED</p> <p>Sam Hill</p>		<p>DWG. NO.</p> <p>CAD-005065</p>		<p>SIZE</p> <p>A</p>	
				<p>REV. NO.</p> <p>1</p>		<p>SCALE</p> <p>NTS</p>	
				<p>SHEET</p> <p>1 OF 1</p>			