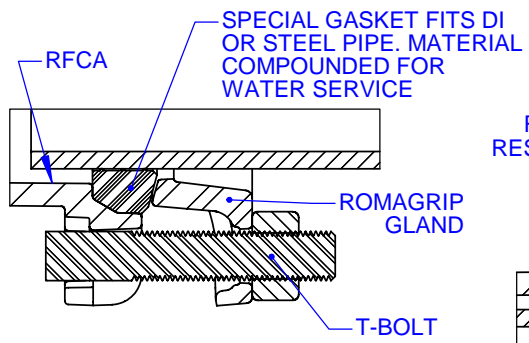
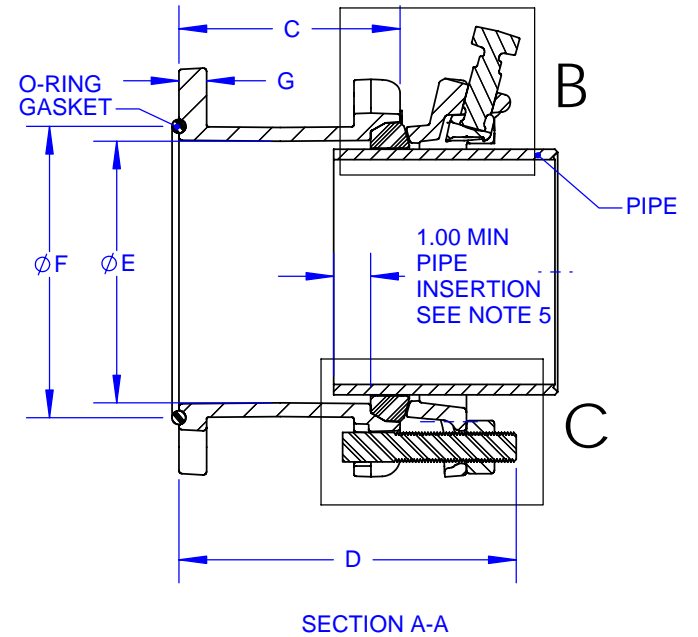
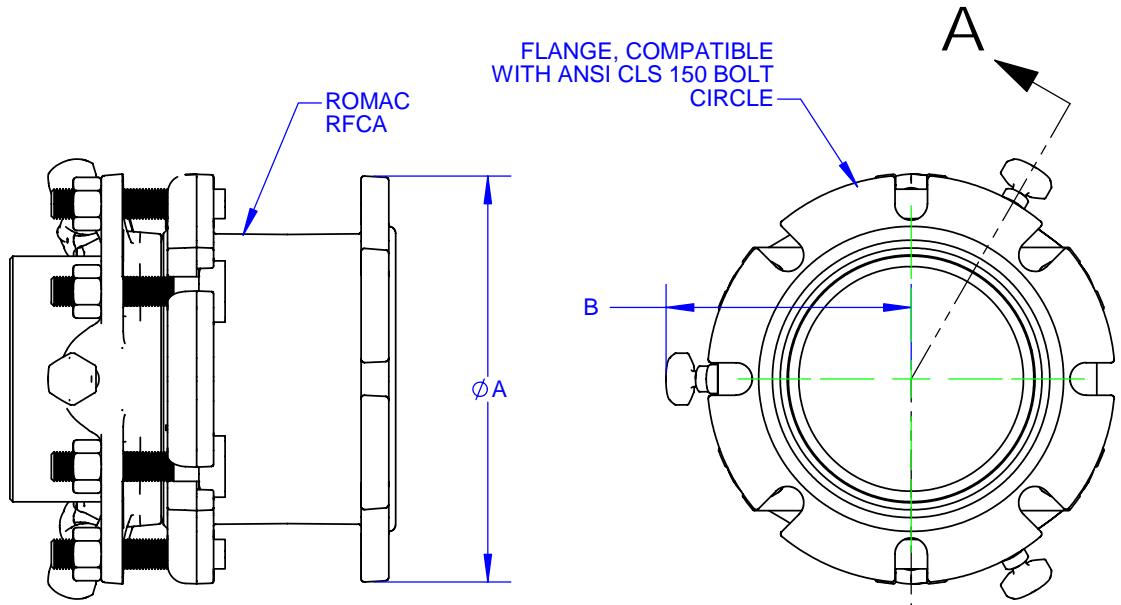
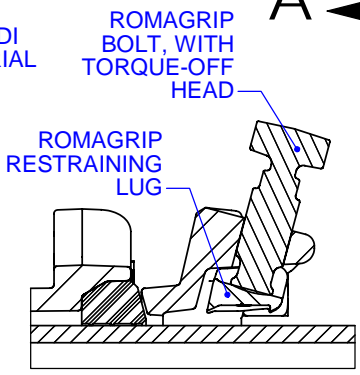


REVISIONS			
REV	DESCRIPTION	DATE	APPROVED
1	"E" DIMENSION WAS INCORRECT, ADDED NOTE 5, & ADDED 10" M IN. DIMENSION.	27/Jan/03	NST III
2	ADDED PVC PIPE TO NOTE 4	18/Apr/03	NST III
3	ADDED DIMENSION "F"	3/June/03	NST III
4	ADDED DIMENSION "G"	7/May/04	NST III



DETAIL C
SCALE 1 : 3



DETAIL B
SCALE 1 : 3

NOM. SIZE	DEFL. (deg)	FLG		RG MAX	T BOLTS		PRESS. (PSIG)		DIMENSIONS					WGT, LBS
		OD	A		QTY	SIZE	LGTH	WKG	TEST	C	D	E	F	
3	2.0	7.5	5.3	4	5/8"	3.75	275	412.5	4.88	8.00	4.04	4.66	0.75	21
4	3.5	9.0	5.7	4	3/4"	4.25	275	412.5	5.50	9.00	5.00	6.00	0.75	29
6	3.5	11.0	6.7	6	3/4"	4.25	275	412.5	6.00	9.25	7.10	7.90	0.75	40
8	3.3	13.5	7.8	6	3/4"	4.25	275	412.5	6.00	9.25	9.25	10.00	0.75	53
10	3.0	16.0	8.8	8	3/4"	4.25	275	412.5	6.75	10.25	11.30	12.40	0.75	82
12	3.0	19.0	9.9	8	3/4"	4.25	275	412.5	6.81	10.25	13.40	15.12	0.81	110

NOTES:

1. COATING NSF 61 CERTIFIED: ROMAC SHOPCOAT PAINT. FUSION BONDED EPOXY AVAILABLE.
2. PRESSURE RATING: SEE TABLE.
3. DUCTILE IRON AND T-BOLTS PER AWWA C111. STAINLESS STEEL FASTENERS AVAILABLE.
4. FOR USE WITH DUCTILE IRON PIPE, STEEL PIPE, AND PVC PIPE (A ROMAC RG-PVC RESTRAINER IS REQUIRED WHEN USED ON PVC)
5. THE MINIMUM PIPE INSERTION IS 1.0" AT BOTH ZERO DEFLECTION AND AT MAXIMUM DEFLECTION VALUES (SEE TABLE).

THIS DRAWING CONTAINS CONFIDENTIAL PROPRIETARY INFORMATION AND IS THE PROPERTY OF ROMAC IND., INC. IT'S TO BE USED ONLY FOR THE PURPOSE FOR WHICH IT'S SUBMITTED AND SHALL NOT HAVE ITS INFORMATION DISCLOSED OR REPRODUCED IN WHOLE OR IN PART FOR ANY PURPOSE WITHOUT PRIOR WRITTEN PERMISSION OF ROMAC IND., INC.

SIGNATURES		DATE			ROMAC IND. INC., SEATTLE, WA	
DRAWN: NIELS THOGERSEN III		22 NOV 2002			TITLE 3" - 12" RFCA RESTRAINED FLANGE COUPLING ADAPTER	
CHECKED: GEORGE DENISON		18 APR 2003				
ISSUED:						
ENGRG:				SIZE: A	DWG. NO. B2111-A	REV. NO. 4
MATERIAL: DUCTILE IRON, ASTM A536 GR 65-45-12		SCALE: NTS		SHEET 1 OF 1		