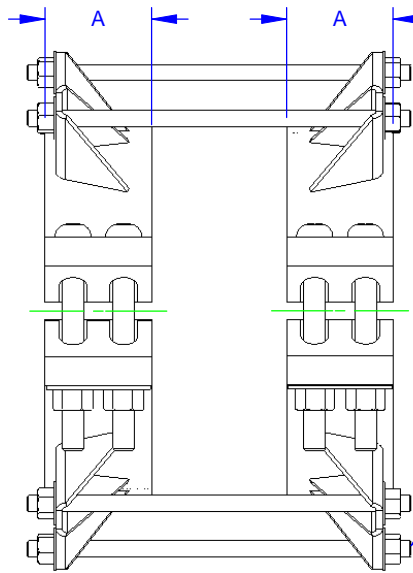
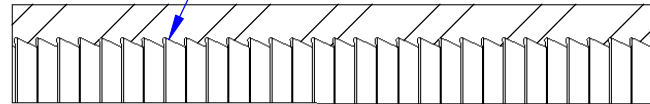


SIDE BOLTS, TRACKHEAD, Ø"G" X 9.0 LG. QTY: "E"



HARNES RODS, Ø"F" X "D" LG. QTY:"C"

MACHINED TEETH



SECTION A-A

- NOTES:
- MATERIAL MILD STEEL UNLESS OTHERWISE SPECIFIED.
  - SIDE BOLT AND HARNES ROD MATERIAL PER AWWA C111.
  - COATING PER CUSTOMER ORDER. SHOP COAT ENAMEL STANDARD. FUSION BOND EPOXY EXTERIOR COATING AVAILABLE.

REVISIONS			
REV.	DESCRIPTION	DATE	APPROVED
0	INITIAL RELEASE	17/15/97	DHF
1	ADDED 32.00 SIZE, COLS "F" & "G"	9/17/07	NS/III
2	ADDED PRESSURE RATINGS ADDED COLUMN H	7/21/08	SH
3	ADDED SIZES: 14.00, 16.00, 18.00, 18.70, 20.00, 22.05, 24.00 & 24.80 ADDED BC MIN/MAX "ØH" 17.40 SS PSI WAS 169 21.60 SS PSI WAS 146 25.80 SS PSI WAS 154 32.00 SS PSI WAS 181	9/24/09	PNN
4	ADDED MAX CLEARANCE 14.00-32.00 Ø"H" WAS CHANGED	10/21/09	PNN

PIPE SIZE	DIMENSIONS								WORKING PRESSURE		
	A	B	C	D	E	ØF	G	ØH	MAX CLEARANCE	HSLA ROD	SS ROD
14.00	5.0	22.1	6	26.0	8	3/4	1	16.49 / 19.99	19.24	305	260
15.30	5.0	23.4	6	26.0	8	3/4	1	17.79 / 21.29	20.54	305	218
16.00	5.0	24.1	6	26.0	8	3/4	1	18.49 / 21.99	21.24	305	199
17.40	5.0	25.5	6	26.0	8	3/4	1	19.89 / 23.39	22.64	305	225
18.00	5.0	26.1	8	26.0	8	3/4	1	20.49 / 23.99	23.24	305	210
18.70	5.0	26.8	8	26.0	8	3/4	1	21.19 / 24.69	23.94	305	194
19.50	5.0	27.6	8	26.0	8	3/4	1	21.99 / 25.49	24.74	305	179
20.00	7.0	28.1	8	32.0	12	3/4	1	22.49 / 25.99	25.24	235	170
21.60	7.0	29.7	8	32.0	12	3/4	1	24.09 / 27.59	26.84	235	146
22.05	7.0	30.2	8	32.0	12	3/4	1	24.54 / 28.04	27.29	235	140
24.00	7.0	32.1	12	32.0	12	3/4	1	26.49 / 29.99	29.24	235	177
24.80	7.0	32.9	12	32.0	12	3/4	1	27.29 / 30.79	30.04	235	166
25.80	7.0	33.9	12	32.0	12	3/4	1	28.29 / 31.79	31.04	235	153
32.00	10.0	43.0	14	42.0	16	1	1-1/8	36.43 / 40.19	39.07	235	210

<p>PROPRIETARY NOTICE</p> <p>THIS DRAWING CONTAINS CONFIDENTIAL PROPRIETARY INFORMATION AND IS THE PROPERTY OF ROMAC IND., INC. IT IS TO BE USED ONLY FOR THE PURPOSE FOR WHICH IT WAS SUBMITTED AND SHALL NOT HAVE ITS INFORMATION DISCLOSED OR REPRODUCED IN WHOLE OR IN PART FOR ANY PURPOSE WITHOUT PRIOR WRITTEN PERMISSION OF ROMAC IND., INC.</p>	<p>UNLESS OTHERWISE SPECIFIED</p> <p>DIMENSIONS ARE IN INCHES</p> <p>TOLERANCES ARE ON:                      1 PL DECIMALS ± .060                      2 PL DECIMALS ± .030                      3 PL DECIMALS ± .010                      ANGLES ± 1°                      FRACTIONS ± 1/64</p>	<p>SIGNATURES</p> <p>DRAWN</p> <p>CHECKED</p> <p>APPROVAL ORGANIZATIONS ENGINEERING</p>
--	--	---

<p>ROMAC INDUSTRIES INC., BOTHELL, WA</p>			
<p>TITLE SJ470 PIPE RESTRAINER 14" - 30"</p>			
DWG. NO. B1405-A	SIZE A	REV. NO. 4	SCALE NTS
SHEET 1 OF 1		SHEET 1 OF 1	