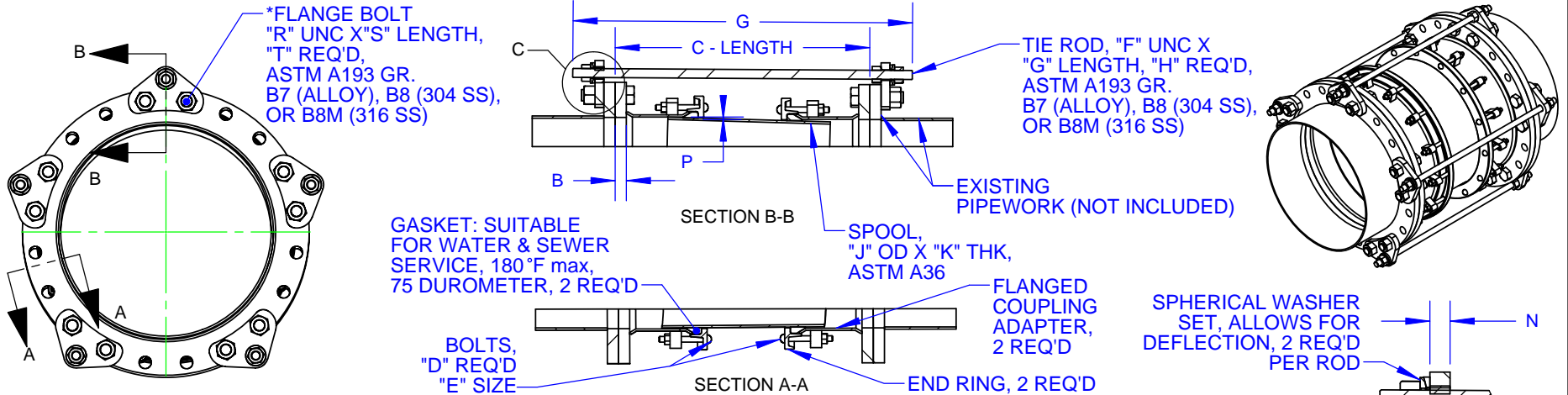


B2358-A

NOM SIZE	DIMENSIONS					BOLTS		TIE RODS			SPOOL		HARNESS LUG THK	OFFSET		MAX DEFL. (DEG)	*FLANGE BOLT			APPROX. WEIGHT		
	FLANGE OD	FCA FLANGE THK	C - LENGTH			QTY	SIZE	SIZE	LENGTH	QTY	OD	THK		AT MIN. LENGTH	AT MAX. LENGTH		Q	R	S		T	LBS
			NOM.	MIN.	MAX.																	
14	21.00	0.94	23.75	22.25	25.25	16	5/8 - 11	1	35.00	2	14.00	0.25	100	0.25	0.37	2.25	1	6.00	8	274		
16	23.50	1.00	24.75	23.25	26.25	20	5/8 - 11	1	36.25	2	16.00	0.25	100	0.25	0.36	2.00	1	6.00	8	322		
18	25.00	1.06	24.75	23.25	26.25	20	5/8 - 11	1	36.50	3	18.00	0.25	100	0.25	0.35	2.00	1 1/8	6.25	12	367		
20	27.50	1.13	24.88	23.38	26.38	24	5/8 - 11	1	37.25	4	20.00	0.25	100	0.25	0.35	2.00	1 1/8	6.50	16	438		
24	32.00	1.25	25.13	23.63	26.63	28	5/8 - 11	1	38.00	5	24.00	0.25	100	0.25	0.35	2.00	1 1/4	7.00	20	576		
30	38.75	1.38	26.38	24.88	27.88	32	5/8 - 11	1 1/4	40.75	5	30.00	0.38	125	0.25	0.34	1.75	1 1/4	8.00	20	908		
36	46.00	1.63	26.88	25.38	28.38	36	5/8 - 11	1 1/4	41.75	7	36.00	0.38	125	0.25	0.34	1.75	1 1/2	8.50	28	1272		
42	53.00	1.75	28.63	27.13	30.13	40	5/8 - 11	1 1/4	44.00	9	42.00	0.38	125	0.25	0.33	1.50	1 1/2	9.00	36	1673		
48	59.50	1.88	30.75	29.25	32.25	44	5/8 - 11	1 1/2	47.75	8	48.00	0.38	175	0.25	0.32	1.25	1 1/2	10.25	32	2098		
54	66.25	2.13	31.25	29.75	32.75	48	5/8 - 11	1 1/2	49.25	10	54.00	0.38	175	0.25	0.32	1.25	1 3/4	10.75	40	2671		
60	73.00	2.25	31.50	30.00	33.00	56	5/8 - 11	1 1/2	49.75	13	60.00	0.38	175	0.25	0.32	1.25	1 3/4	11.00	52	3245		
66	80.00	2.50	34.88	33.38	36.38	60	5/8 - 11	1 3/4	54.75	11	66.00	0.38	200	0.25	0.30	1.00	1 3/4	12.25	44	4052		
72	86.50	2.63	35.13	33.63	36.63	64	5/8 - 11	1 3/4	55.25	13	72.00	0.38	200	0.25	0.30	1.00	1 3/4	12.50	52	4659		



NOTES:

- NSF 61 CERTIFIED COATING: FUSION BONDED EPOXY IS STANDARD. OTHER COATINGS AVAILABLE UPON REQUEST.
- FASTENERS: HSLA PER ASTM A588 IS STANDARD. STAINLESS STEEL TYPE 304 OR 316 PER ASTM A193 AVAILABLE UPON REQUEST.
- PRESSURE RATED UP TO FLANGES PROVIDED; 14" - 72" AWWA CLS D 150 PSIG WORKING, 250 PSIG TEST. FOR HIGHER PRESSURES, AWWA CLS E OR CLS F FLANGES AVAILABLE.
- ACCOMMODATES DEFLECTION AND/OR OFFSET IN A SYSTEM PROVIDING A SOLID CONNECTION AFTER INSTALLATION.
- NOT INTENDED TO PROVIDE LATERAL MOVEMENT IN PIPELINE.
- *FLANGE BOLTS PROVIDED ARE ALL THREAD STUDS WITH TWO NUTS PER STUD AND ARE USED ONLY WHERE HARNESS LUGS BOLT TO FLANGE. USER TO PROVIDE REMAINING FLANGE BOLTS.

REVISIONS			
REV.	DESCRIPTION	DATE	APPROVED
0	INITIAL RELEASE	2/26/04	NST III
1	ADDED FLG BOLT INFO	4/13/01	SH

<p>PROPRIETARY NOTICE</p> <p>THIS DRAWING CONTAINS CONFIDENTIAL PROPRIETARY INFORMATION AND IS THE PROPERTY OF ROMAC IND., INC. IT IS TO BE USED ONLY FOR THE PURPOSE FOR WHICH IT WAS SUBMITTED AND SHALL NOT HAVE ITS INFORMATION DISCLOSED OR REPRODUCED IN WHOLE OR IN PART FOR ANY PURPOSE WITHOUT PRIOR WRITTEN PERMISSION OF ROMAC IND., INC.</p>	<p>UNLESS OTHERWISE SPECIFIED</p> <p>DIMENSIONS ARE IN INCHES</p> <p>TOLERANCES ARE ON: 1 PL DECIMALS ± .060 2 PL DECIMALS ± .030 3 PL DECIMALS ± .010 ANGLES ± 1° FRACTIONS ± 1/64</p>	SIGNATURES			<p>ROMAC INDUSTRIES INC., BOTHELL, WA</p> <p>TITLE EQUIPMENT CONNECTION FITTING, ECF400 14" - 72" AWWA CLS D</p>						
		DRAWN			CHECKED		DWG. NO.	SIZE	REV. NO.	SCALE	SHEET
		APPROVAL ORGANIZATIONS			ENGINEERING		B2358-A	A	1	NTS	1 OF 1