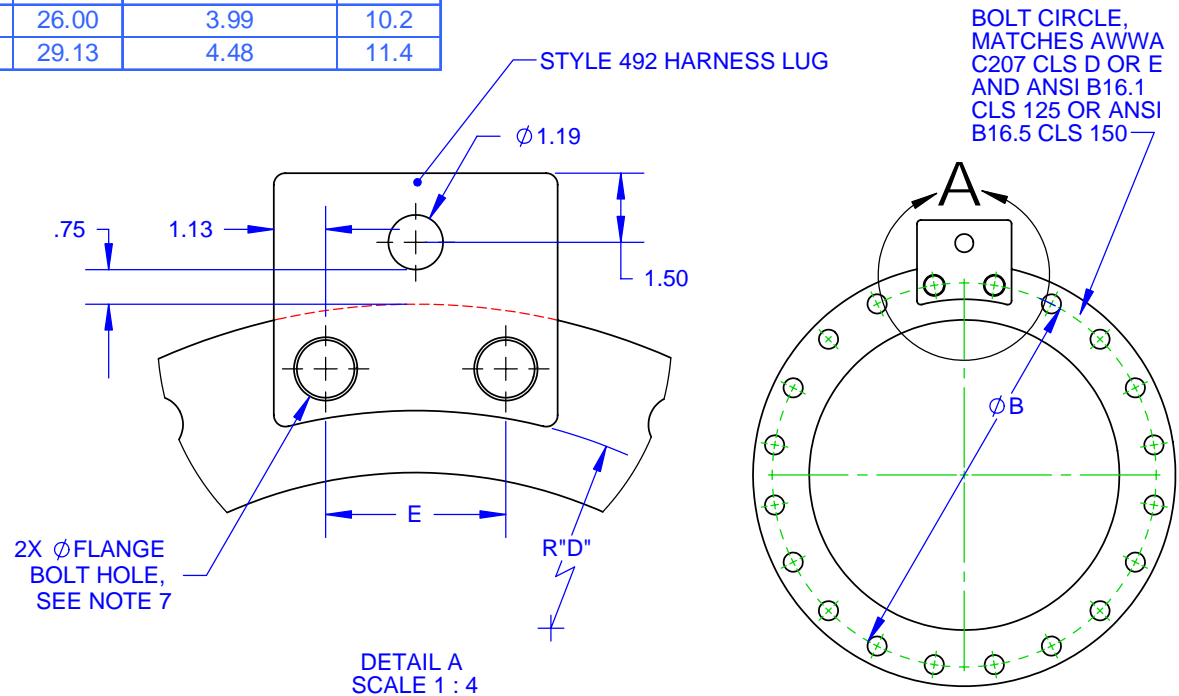


LUG SIZE	TIE ROD QUANTITY (Ø1.0"), MAXIMUM TEST PRESSURE					BOLT CIRCLE ØB	LUG RADIUS D	FLG HOLE CHORD LENGTH E	WGT, EA (LBS)
	50 PSI	100 PSI	150 PSI	200 PSI	250 PSI				
12	NA	NA	NA	NA	4	17.00	7.21	4.40	9.2
14	NA	NA	NA	4	5	18.75	8.25	4.85	9.7
16	NA	NA	4	5	6	21.25	9.35	4.15	8.8
18	NA	NA	5	6	8	22.75	10.39	4.44	8.9
20	NA	4	6	8	9	25.00	11.44	3.91	8.0
24	NA	6	8	NA	NA	29.50	13.54	4.61	9.3
30	4	8	12	NA	NA	36.00	16.50	4.03	8.2
36	6	12	NA	NA	NA	42.75	19.69	4.19	10.7
42	8	15	NA	NA	NA	49.50	22.78	4.31	11.0
48	10	20	NA	NA	NA	56.00	26.00	3.99	10.2
54	13	NA	NA	NA	NA	62.75	29.13	4.48	11.4

REV	DESCRIPTION	DATE	APPROVED
1	REMOVED 6 - 10 SIZES, ADDED 12 - 16 & 24 - 54, ADDED STYLE 492 TO TITLE, ADDED MATERIALS, CHANGED TO Ø10 TIE ROD, ADDED WEIGHTS	8/29/2007	NST III

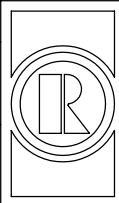
NOTE:

- LUG DESIGN ALLOWS MAXIMUM CLEARANCE BETWEEN PIPE OR FLANGE HUB OD AND LUG.
- EACH TIE ROD REQUIRES 2 LUGS, ONE LOCATED ON THE OUTSIDE OF EACH FLANGED CONNECTION.
- HARNESS PLATE IS 1" THICK. MATERIAL: STEEL A36, STAINLESS A240 TYPE 304 OR 316
- TIE ROD SIZE IS Ø 1.0". TIE ROD MATERIAL = ASTM A193 B7, (ALLOY STEEL), B8 (304 SS), OR B8M (316 SS)
- COATING: BARE, SHOPCOAT PAINT, OR NSF 61 FUSION BONDED EPOXY, BLACK
- 4 NUTS REQUIRED PER TIE ROD, (DOUBLE NUT CONFIGURATION.)
- HARNESS LUG HOLES THAT MATCH FLANGE HOLES ARE 1/8" LARGER.
- TEST PRESSURE = 1.25 X WORKING PRESSURE, PIPE THRUST BASED ON TEST PRESSURE
- MEETS SPECIFICATION "P110"
- SPECIFY TIE ROD LENGTH WHEN ORDERING.



DETAIL A  
SCALE 1 : 4

THIS DRAWING CONTAINS CONFIDENTIAL PROPRIETARY INFORMATION AND IS THE PROPERTY OF ROMAC IND., INC. IT'S TO BE USED ONLY FOR THE PURPOSE FOR WHICH IT'S SUBMITTED AND SHALL NOT HAVE ITS INFORMATION DISCLOSED OR REPRODUCED IN WHOLE OR IN PART FOR ANY PURPOSE WITHOUT PRIOR WRITTEN PERMISSION OF ROMAC IND., INC.

UNLESS OTHERWISE SPECIFIED  DIMENSIONS ARE IN INCHES TOLERANCES ARE ON: 2 PL DECIMALS +/- .05 3 PL DECIMALS +/- ANGLES +/- FRACTIONS +/-	SIGNATURES  N. THOGERSEN	DATE  1/26/2005		ROMAC IND. INC., SEATTLE, WA	
	CHECKED			TITLE HARNESS LUG, 12" - 54", 3 HOLE, ANSI CLS125/150 STYLE 492, Ø1.0" TIE ROD	
MATERIAL:  SEE NOTE 3	SIZE  A	DWG. NO.  B2502-A	REV. NO.  1	SCALE NTS	
		SHEET 1 OF 1			