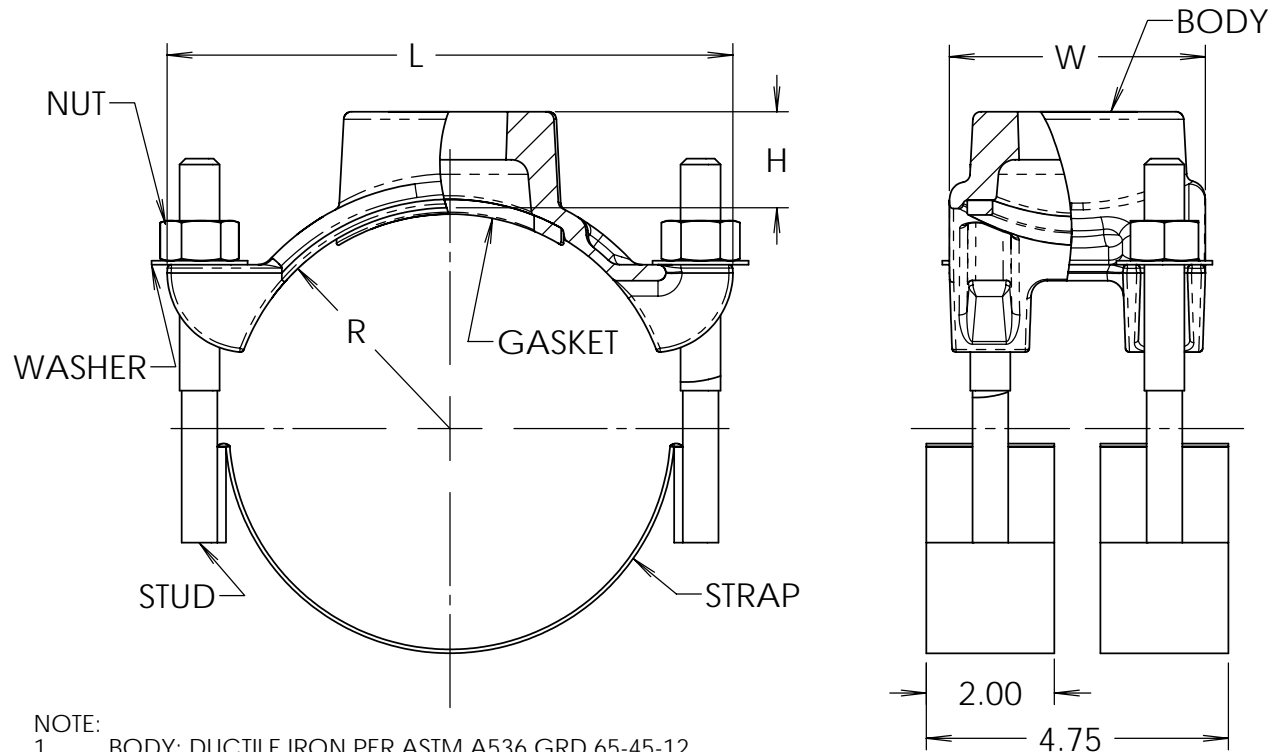


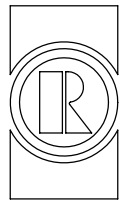
DIMENSIONS					
NOM. SIZE	PIPE OD RANGE	L	R	H	W
2"	2.38 - 2.50	4.88	1.25	1.35	3.31
3"	3.50	5.94	1.75	1.35	3.31
	3.45 - 4.05	6.38	2.21	1.35	3.31
4"	4.00 - 4.50	6.94	2.25	1.50	4.00
	4.50 - 5.40	7.63	2.70	1.50	4.00
6"	6.00 - 6.63	8.75	3.32	1.50	4.00
	6.63 - 7.60	9.50	3.80	1.50	4.00
8"	8.00 - 8.63	11.19	4.32	1.50	4.00
	8.63 - 9.05	11.13	4.53	1.50	4.00
10"	10.00 - 10.75	13.75	5.38	1.50	4.00
	10.75 - 11.10	13.06	5.55	1.50	4.00
12"	11.10 - 12.12	14.19	6.06	1.50	4.00
	12.00 - 12.75	16.56	6.38	1.50	4.00
14"	12.75 - 13.20	16.19	6.60	1.50	4.00
	13.20 - 14.38	16.31	7.19	1.50	4.00
16"	15.30 - 16.80	11.69	8.40	1.50	4.00
18"	17.40 - 18.90	12.69	9.45	1.50	4.00
20"	19.50 - 21.10	12.69	10.45	1.50	4.00
22"	21.10 - 22.70	12.69	11.35	1.50	4.00
24"	22.70 - 24.30	12.63	12.15	1.50	4.00
26"	24.30 - 25.90	14.5	12.95	1.50	4.00
28"	25.70 - 27.30	14.5	13.65	1.50	4.00
30"	27.30 - 28.90	14.5	14.45	1.50	4.00
	28.90 - 30.50	14.5	15.25	1.50	4.00
30"	30.50 - 32.10	14.5	16.05	1.50	4.00

REVISIONS			
REV.	DESCRIPTION	DATE	APPROVED
1	2" RANGE WAS 2.38 - 3.50	2008-02-05	DH EATON
2	RVSD NOTE 2: NYLON WAS 202N, ENAMEL WAS 202S	2008-02-05	DH EATON



- NOTE:
1. BODY: DUCTILE IRON PER ASTM A536 GRD 65-45-12.
 2. COATING:
 - 202NU AND 202NS SADDLES: NYLON, 10-12 MILS THICK.
 - 202U AND 202S SADDLES: SHOPCOAT ENAMEL.
 3. THREAD: "IP" (NPT) OR "CC" PER AWWA C800 AVAILABLE.
 4. GASKET: NITRILE BUTADIENE RUBBER (NBR) PER ASTM D2000 MBC 610.
 5. STRAP, STUD, AND NUT: TYPE 304 STAINLESS STEEL:
 - WELDING: GMAW AND GTAW. CHEMICALLY CLEANED AND PASSIVATED.
 - 1-1/2" THROUGH 3" SIZES, 1/2"-NC ROLL THREAD, WITH HEAVY HEX NUTS AND 1/2" FLAT WASHER.
 - 4" AND LARGER SIZES, 5/8"-NC ROLL THREAD, WITH HEAVY HEX NUT AND 5/8" FLAT WASHER.

THIS DRAWING CONTAINS CONFIDENTIAL PROPRIETARY INFORMATION AND IS THE PROPERTY OF ROMAC IND. INC. IT IS TO BE USED ONLY FOR THE PURPOSE FOR WHICH IT IS SUBMITTED AND SHALL NOT HAVE ITS INFORMATION DISCLOSED OR REPRODUCED IN WHOLE OR IN PART FOR ANY PURPOSE WITHOUT PRIOR WRITTEN PERMISSION OF ROMAC IND. INC.

UNLESS OTHERWISE SPECIFIED	SIGNATURES		ROMAC INDUSTRIES INC., BOTHELL, WA	
DIMENSIONS ARE IN INCHES TOLERANCES ARE ON: yes 1 PL DECIMALS +/- 2 PL DECIMALS +/- 3 PL DECIMALS +/- ANGLES +/- FRACTIONS +/-	DRWN CHECKED		TITLE	202S AND 202N SERVICE SADDLES (2" - 30")
		SIZE	DWG. NO.	REV. NO.
		A	B2622-A	2
		SCALE	SHEET 1 OF 1	
		1:3		