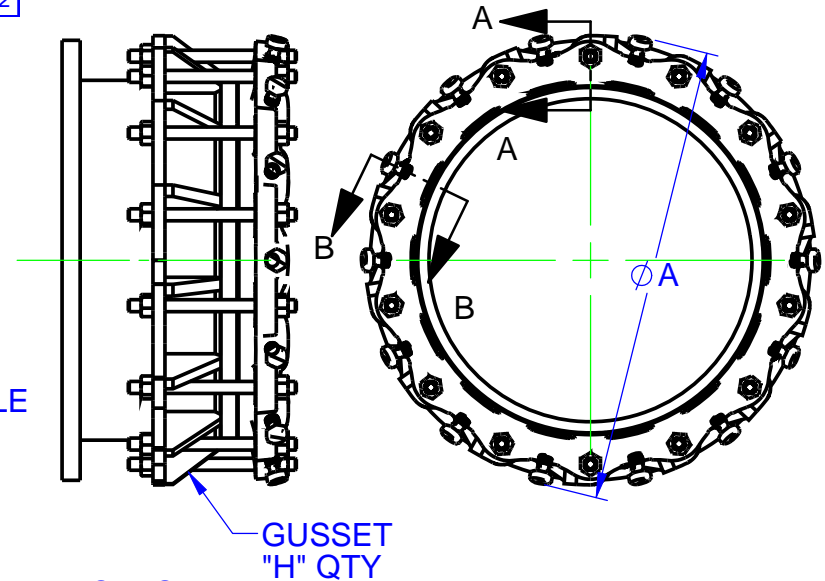
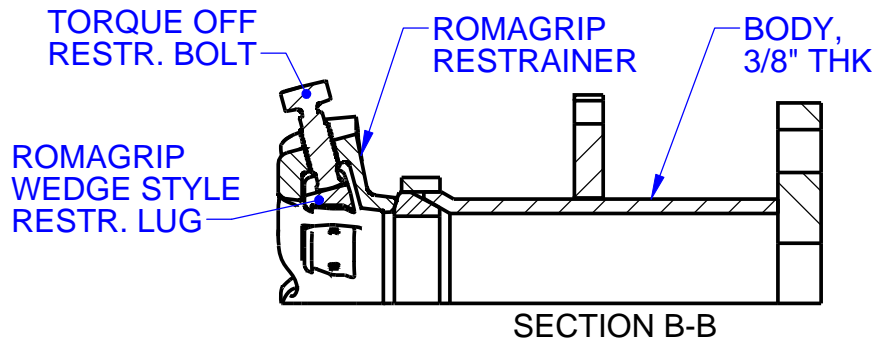
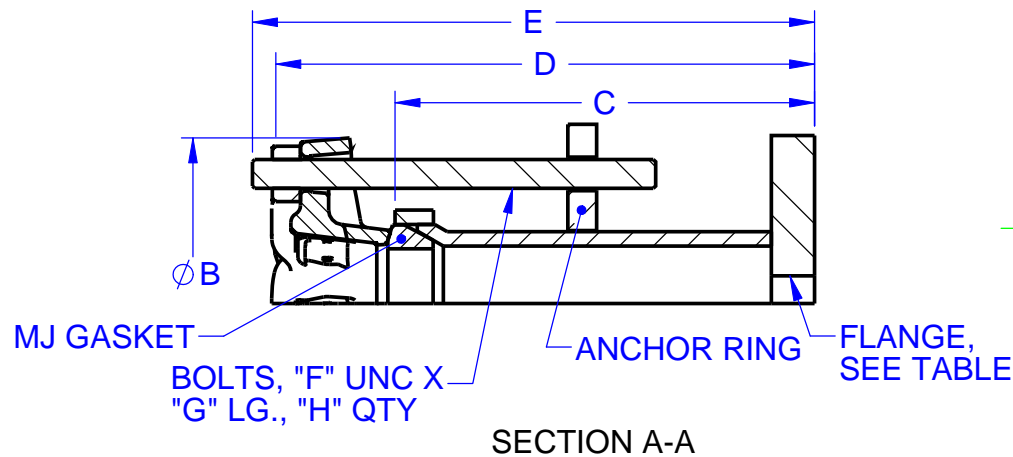



NOM. SIZE	PIPE OD	FLG SIZE	DEFL.	RG MAX	GLD OD	PRESS.		LENGTH			BOLTS			
			(deg)	A	B	WKG	TEST	C	D	E	F	G	H	
30	32.00	30 CLS D	1.5	43.5	39.5	150	188	14.18	18.13	19.88	1	12.00	20	
30	32.00	30 CLS E	1.5	43.5	39.5	250	313	19.63	23.58	25.33	1	12.00	20	
36	38.30	36 CLS D	1.5	50.0	46.4	150	188	18.38	22.33	24.08	1	12.00	24	
36	38.30	36 CLS E	1.5	50.0	46.4	250	313	19.88	23.83	25.58	1	12.00	24	
42	44.50	42 CLS D	1.5	56.3	53.5	150	188	18.51	23.82	25.57	1 1/4	12.00	28	
42	44.50	42 CLS E	1.5	56.3	53.5	250	313	20.14	25.45	27.20	1 1/4	12.00	28	
48	50.80	48 CLS D	1.5	62.6	60.4	150	188	18.63	23.94	25.69	1 1/4	12.00	32	
48	50.80	48 CLS E	1.5	62.6	60.4	250	313	20.26	25.57	27.32	1 1/4	12.00	32	

REVISIONS			
REV.	DESCRIPTION	DATE	APPROVED
0	INITIAL RELEASE	9/14/05	NST III
1	CLS E PRESS. RATING WAS 275. REVISED TO MATCH MJ PRESS. RATING	3/2/06	NST III
2	REVISED RG MAX "A" & GLD OD "B". 30" WAS 38.9 & 39.1, 36" WAS 45.2 & 46.0, 42" "A" WAS 55.6, 48" "A" WAS 61.9	5/29/08	NST III
3	30" CLS D: DIMS "C", "D" & "E" WERE 2.05 LESS. ALL OTHER SIZES: DIMS "C", "D" & "E" WERE 6.0 LESS	1/21/10	SH



- NOTES:
1. COATING PER CUSTOMER ORDER
 2. FASTENERS: STEEL PER ASTM A193 GR B7 STAINLESS STEEL TYPE 304 GRADE B8, TYPE 316 GR B8M
 3. MATERIAL: DUCTILE IRON AND A36 STEEL
 4. SOME INITIAL AXIAL MOVEMENT OF UP TO 0.40" MAY OCCUR AS LUG SEATS ON PIPE

PROPRIETARY NOTICE THIS DRAWING CONTAINS CONFIDENTIAL PROPRIETARY INFORMATION AND IS THE PROPERTY OF ROMAC IND., INC. IT IS TO BE USED ONLY FOR THE PURPOSE FOR WHICH IT WAS SUBMITTED AND SHALL NOT HAVE ITS INFORMATION DISCLOSED OR REPRODUCED IN WHOLE OR IN PART FOR ANY PURPOSE WITHOUT PRIOR WRITTEN PERMISSION OF ROMAC IND., INC.	UNLESS OTHERWISE SPECIFIED DIMENSIONS ARE IN INCHES TOLERANCES ARE ON: 1 PL DECIMALS ± .060 2 PL DECIMALS ± .030 3 PL DECIMALS ± .010 ANGLES ± 1° FRACTIONS ± 1/64	SIGNATURES		 ROMAC INDUSTRIES INC., BOTHELL, WA		
		DRAWN _____ CHECKED _____ APPROVAL ORGANIZATIONS ENGINEERING	TITLE FC400RG 30"-48" CLS D AND CLS E			
		DWG. NO. B2631-A	SIZE A	REV. NO. 3	SCALE NTS	SHEET 1 OF 1