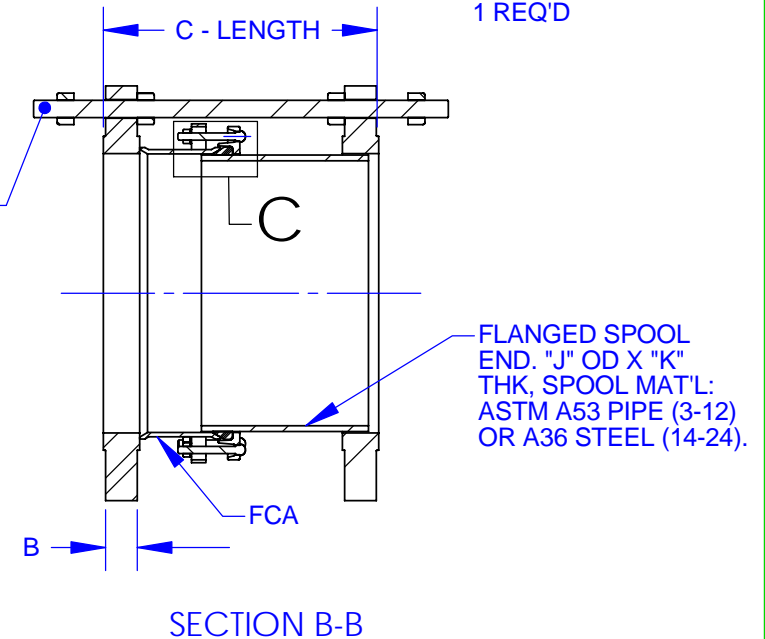
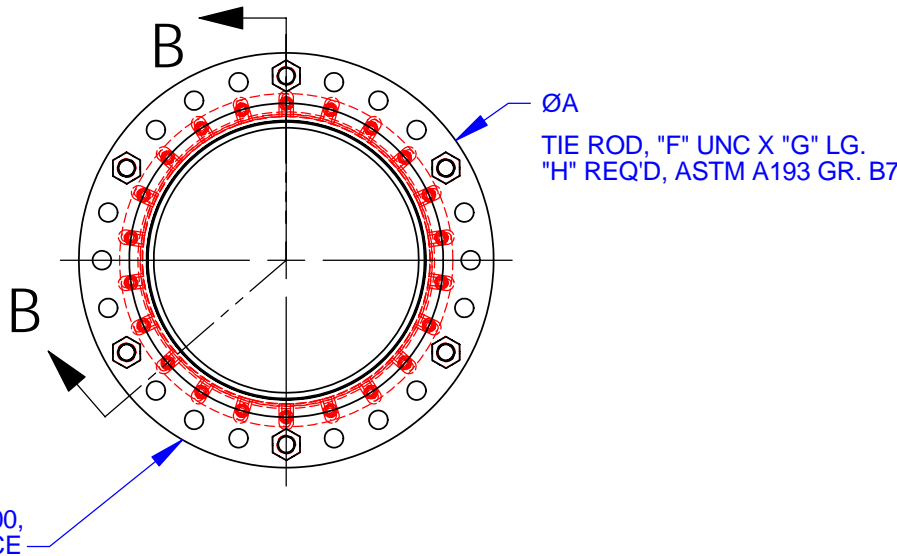
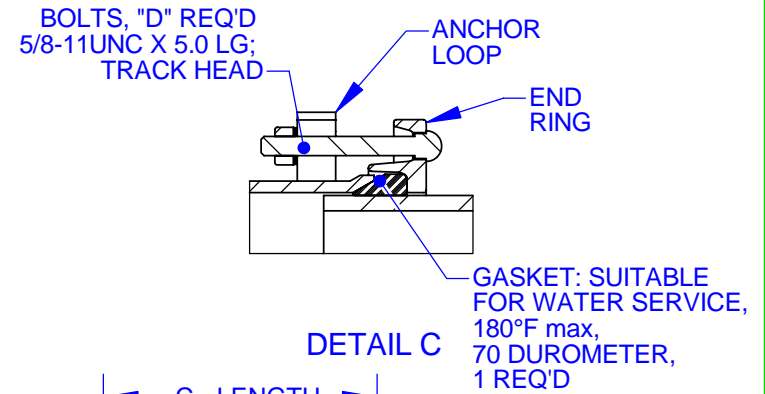


NOM SIZE	DIMENSIONS					END RING BOLTS	TIE RODS				SPOOL	
	FLANGE OD	FLANGE THK	C - LENGTH			QTY	SIZE (UNC)	LENGTH	STEEL QTY	SS QTY	OD	PIPE THK
	A	B	NOM.	MIN.	MAX.	D	F	G	H	H	J	K
3	8.25	1.69	14.25	12.75	15.75	4	3/4" - 10	21.75	2	2	3.50	0.22
4	10.00	1.88	14.50	13.00	16.00	6	3/4" - 10	22.50	2	2	4.50	0.24
6	12.50	2.06	14.75	13.25	16.25	8	3/4" - 10	23.00	2	4	6.63	0.28
8	15.00	2.44	15.75	14.25	17.25	10	7/8" - 9	25.00	4	4	8.63	0.32
10	17.50	2.62	16.25	14.75	17.75	12	1" - 8	26.00	4	6	10.75	0.37
12	20.50	2.88	17.00	15.50	18.50	14	1-1/8" - 7	27.75	4	6	12.75	0.38
14	23.00	3.00	17.50	16.00	19.00	16	1-1/8" - 7	28.25	4	6	14.00	0.50
16	25.50	3.25	18.25	16.75	19.75	18	1-1/4" - 7	29.75	4	6	16.00	0.50
18	28.00	3.50	18.75	17.25	20.25	20	1-1/4" - 7	30.75	6	8	18.00	0.50
20	30.50	3.75	19.25	17.75	20.75	22	1-1/4" - 7	31.75	6	10	20.00	0.63
24	36.00	4.19	20.25	18.75	21.75	26	1-1/2" - 6	34.25	6	10	24.00	0.75

REVISIONS			
REV	DESCRIPTION	DATE	APPROVED
1	ADDED STAINLESS STEEL TIE RODS QTY	26-Dec-07	NST III



NOTES:

1. COATING: NSF 61 CERTIFIED FUSION BONDED EPOXY.
2. FASTENERS: CUSTOMER SPECIFIED. HSLA PER ASTM A588 OR STAINLESS STEEL TYPE 304 OR 316 PER ASTM A193.
3. PRESSURE RATED UP TO FLANGES PROVIDED. ANSI CLASS 300, RATED @ 720 PSIG.
4. WHEN INSTALLING, POSITION THE FLANGED COUPLING END IN THE REQUIRED LOCATION & THEN FOLLOW BOLTING INSTRUCTIONS.
5. NOT INTENDED TO PROVIDE LATERAL MOVEMENT IN PIPELINE.

THIS DRAWING CONTAINS CONFIDENTIAL PROPRIETARY INFORMATION AND IS THE PROPERTY OF ROMAC IND., INC. IT'S TO BE USED ONLY FOR THE PURPOSE FOR WHICH IT'S SUBMITTED AND SHALL NOT HAVE ITS INFORMATION DISCLOSED OR REPRODUCED IN WHOLE OR IN PART FOR ANY PURPOSE WITHOUT PRIOR WRITTEN PERMISSION OF ROMAC IND., INC.

SIGNATURES		DATE			ROMAC IND. INC., SEATTLE, WA	
DRAWN		N. THOGERSEN 2/18/2004			TITLE DISMANTLING JOINT DJ400 3" - 24" ANSI CLS 300	
CHECKED						
MATERIAL: MILD STEEL (A36) & DUCTILE IRON (A536)				SIZE A	DWG. NO. B2357-A	REV. NO. 1
				SCALE NTS	SHEET 1 OF 1	